



INGENIUM CO.,LTD

SINCE 2015

COMPANY PROFILE

PROFESSIONAL INSTALLATION SERVICE



The Latin Word Ingenium has meanings "The ability to have an inborn" specifically refers to cognitive ability. Such as artificial intelligence

Copyright © 2015 All Rights Reserved. - INGENIUM CO.,LTD

BUSINESS PROFILE.

Company Name	: Ingenium Co.,Ltd
Business Trade Name	: Engineering & Turnkey Installation Services
Date Established	: March 2015
Tax ID	: 0-1255-58007-26-4
Business Address (Head Office)	: 25/38 Moo 4 T.Bang Phai A.Muang Nonthaburi,11000 Thailand
Business Address (Factory)	: 37/22 Moo 6 Lat Lum Kaeo, Lat Lum Kaeo District, Pathum Thani 12140 Thailand
Contact Numbers	: Tel/Fax . 02-117-4619
Register Capacity	: THB 20,000,000
Employee	: 28 Person (Full time employee)
Email	: itti@ingenium.co.th
Web Site	: www.ingenium.co.th

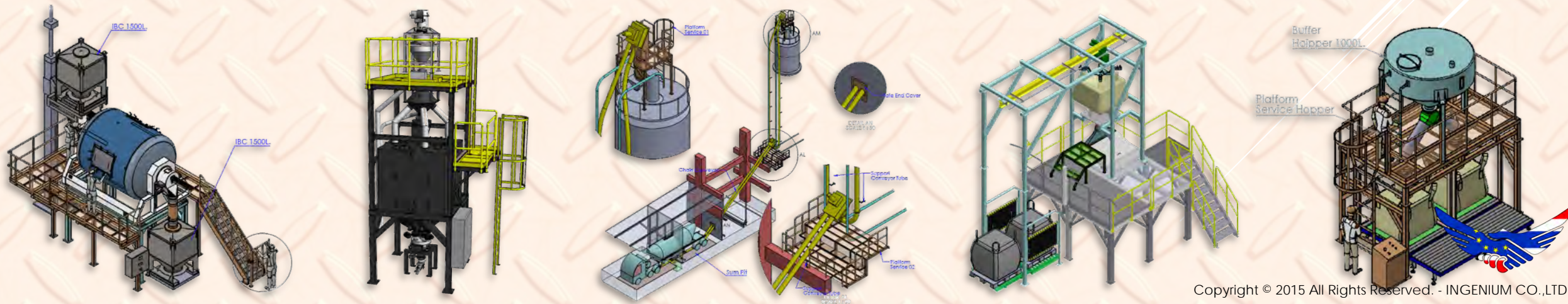


ABOUT US.

Ingenium Co.,Ltd was established since March 2015. We have experience and expertise in bulk solids material handling system and provide LEAN production solutions within various industries. We focus on the complete production process from bulk material handling system, Industrial Sieving and Screening Equipment, High-end Rotary Valves and Diverter Valve, Plastic extrusion System, Pneumatic conveying system, IBC System and production intermittent processes including movement and lifting of goods.

We cover engineering design, manufacturing for stainless and mild steel work, Professional installation service, Commissioning start-up services, and after-sales services.

Ingenium Co.,Ltd projects today range in scope from equipment and accessory sales to complete design and installation of turnkey systems. Our goal is to create a long and successful relationship with our customers to help them achieve improvement of product quality, increase production efficiency and improve labor operations.



5 PILLARS OF OUR BUSINESS

1. Engineering & Consulting Services



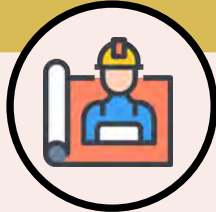
- **Process Improvement Consulting Services**
Analyze and optimize production processes for better efficiency.
- **Engineering Design**
3D process concept design and equipment layout integration.

2. Manufacturing & Fabrication



- **Bulk Material Handling Components**
Supply of equipment and components for bulk material handling.
- **Structural Steel Fabrication**
Fabrication of stainless/mild steel structures, silos, hoppers, tanks, and piping.

3. Installation & System integration



- **Installation Service**
Professional installation services for bulk material handling and other systems.
- **Electrical and Control**
PLC programming and operation interface for AB, Siemens, Omron, Mitsubishi, etc.

4. Logistics & Manpower Services



- **Loading and Unloading Labor Services**
Equipment unloading, unpacking, and positioning services.
- **Manpower Supply Services**
Skilled labor supply for installation and commissioning support.

5. After-Sales & Support Services



- **After Sales/Service and Support**
24/7 technical support by skilled technicians.
- **Certified Service Partner**
1st Certified DMN service partner in Southeast Asia



BOARD OF MANAGEMENT



Itti Na Bangchang

Chairman &
Co-Founder



Suchin Kingkaew

President &
Co-Founder



Sanao Maneepruk

Senior Legal &
Business Advisor



Sutata Puolprasert



Sujitta Kingkaew



Patcharaporn Sasiwimonrit

Chief Officers



Mews Ngamkamolert



Noppharaj Lertakharawitch



Tanapan Pidkanpai



Adisak Arunrung



Nattapong Thamsuna



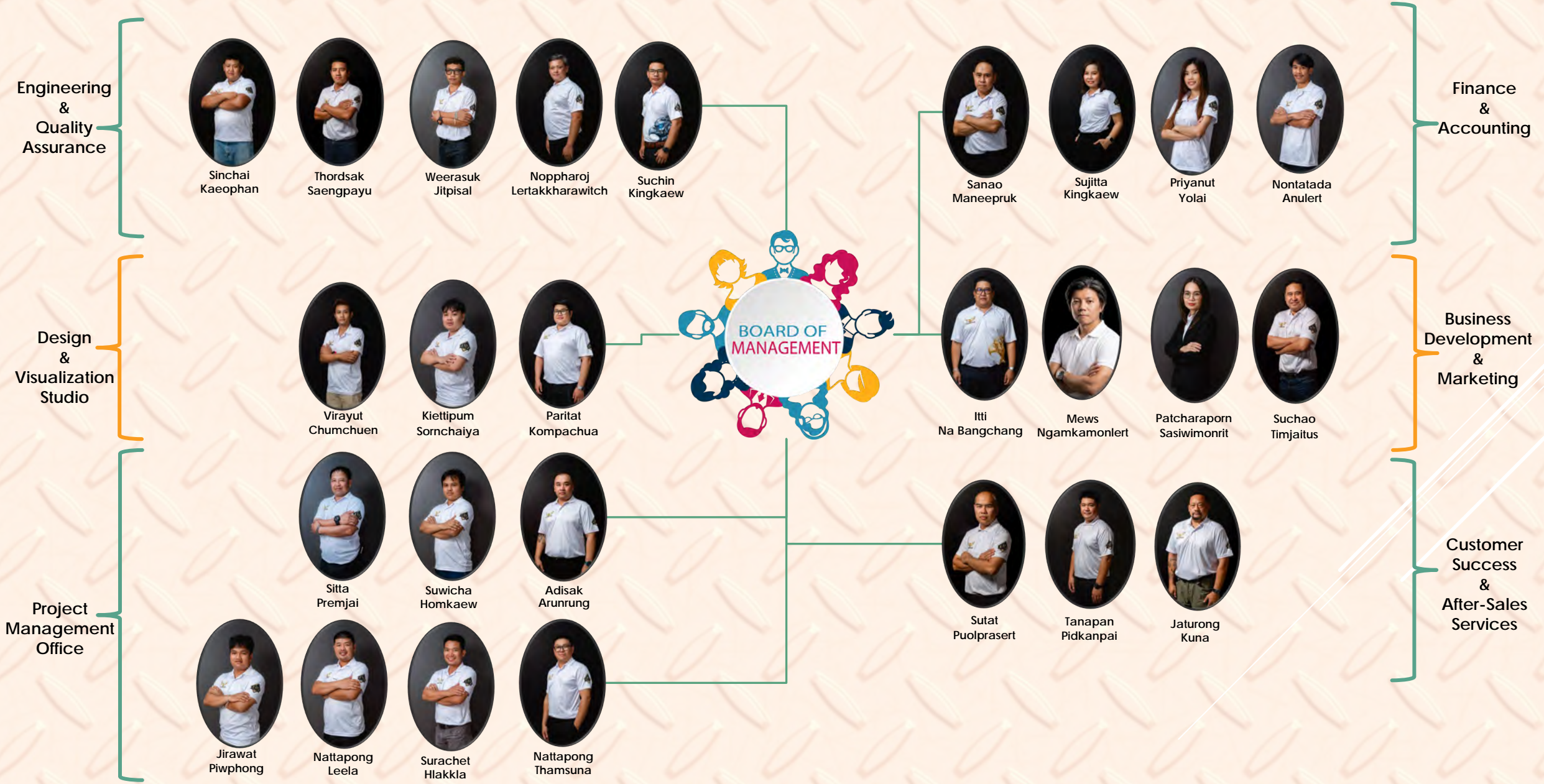
Paritat Kompachua

Group of Manager

Professional Installation Services



ORGANIZATION.



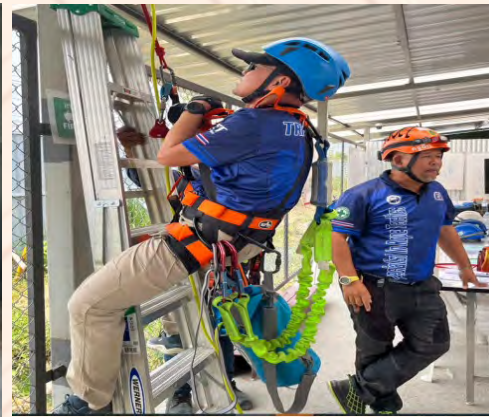


SAFETY FIRST...NO COMPROMISE.

IN-HOUSE SAFETY TRAINING (IG SAFETY DAY)

List of Safety Training Courses with Certificates (for Site Access):

- ✓ Supervisor Safety Officer Training.
- ✓ Working at Height Safety Training.
- ✓ Scaffolding Erection and Inspection Training.
- ✓ Confined Space Entry Safety Training.
- ✓ Crane Operation Safety Training – 4 Key Roles.
- ✓ Basic Firefighting and Emergency Response Training.



SAFETY FIRST... FIVE MINUTES FOR YOUR LIFE



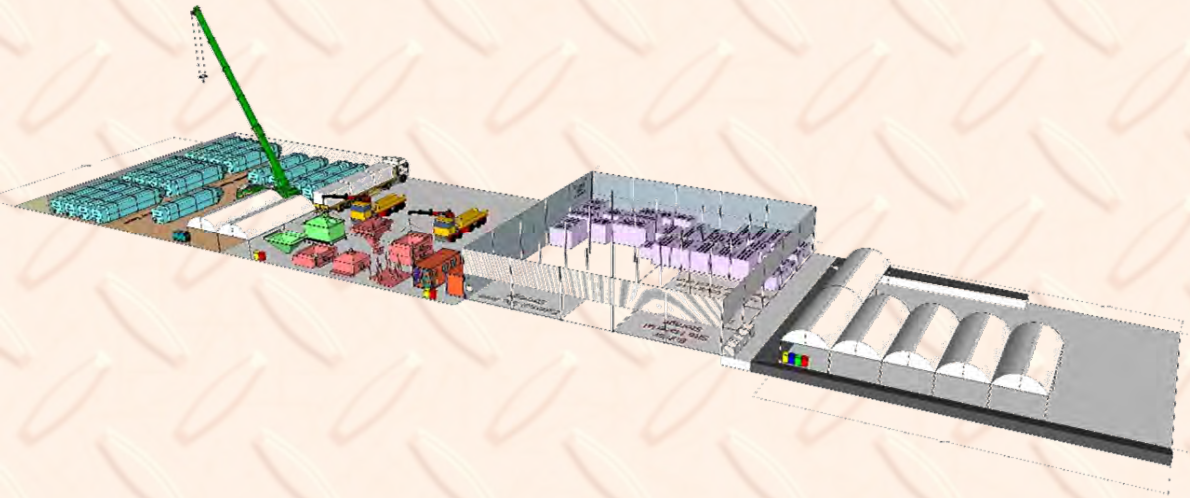
The following approved PPE must be worn on this site at all times

-  Hard hat
-  Goggles
-  High visibility clothing
-  Protective gloves
-  Safety boots

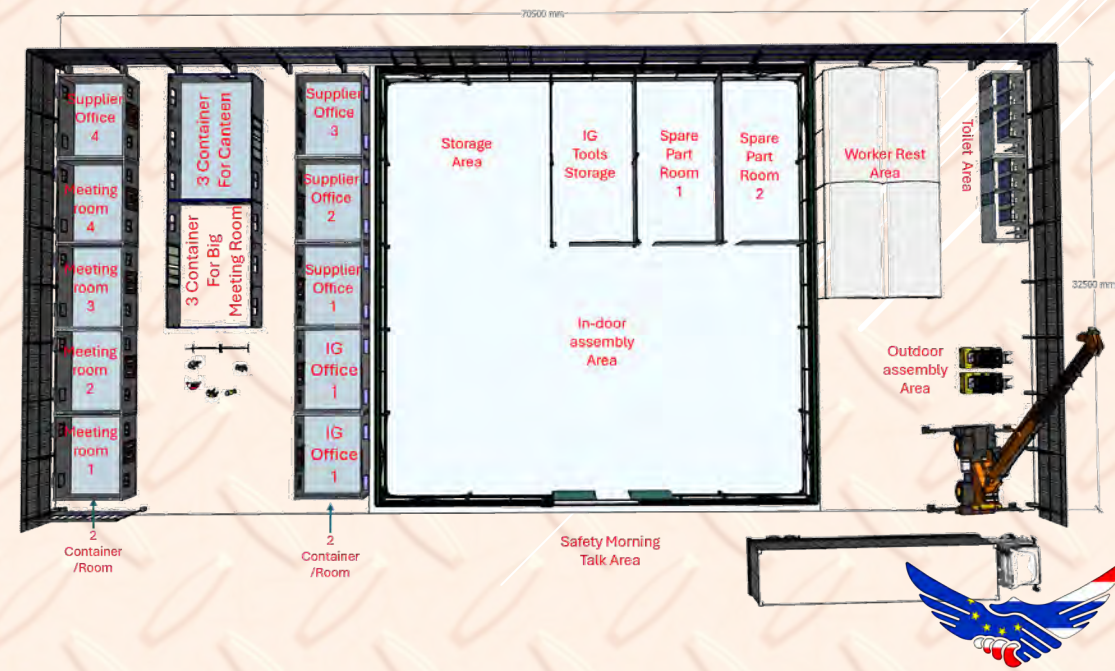
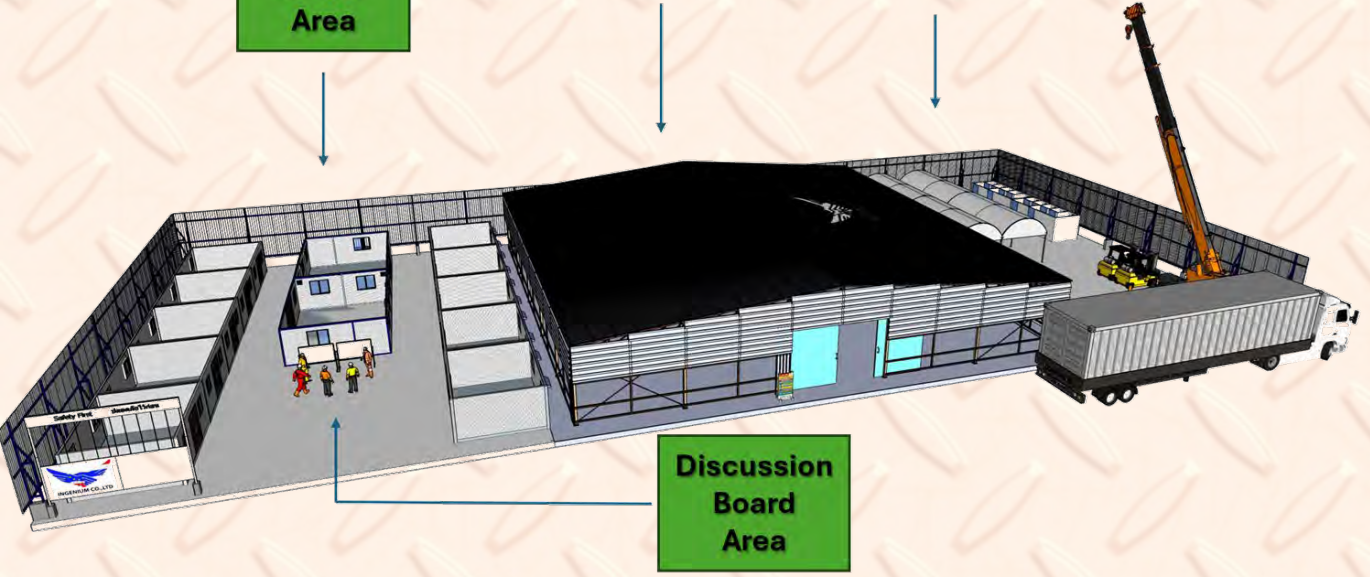




INGENIUM SITE OFFICE AND STORAGE AREA



- Container Office Area
- Storage and Indoor assembly Area
- Worker Area
- Outdoor assembly Area
- Toilet Area



ENGINEERING DESIGN CENTER.

- By 3D and 2D Licensed program



ZW3D™



SketchUp Pro 2017



Adobe Acrobat™



CERTIFICATE.

- Effective Safety Training.
- Basic Vibration, Alignment and Balancing Training.



PROGRESS REPORT

Ingenium Co., Ltd
25/38 Moo 4 T. Bang Phai A. Muang Nonthaburi, 11000 Thailand
Tel/Fax: 02-512-4829
www.ingenium.co.th

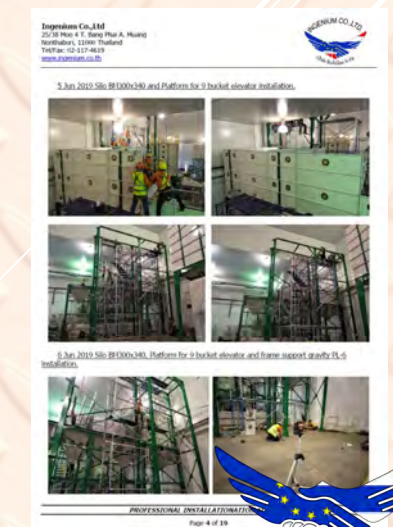
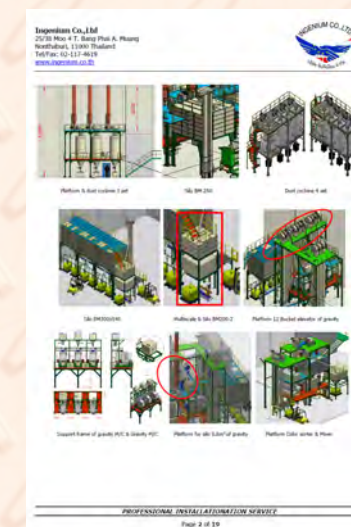
PROGRESS REPORT # 08

Project Name: Platform #8
Client Name: Soft and Strong Co., Ltd
Address: 11000 Thailand
Tel/Fax: 02-512-4829
www.ingenium.co.th

Phase: 1 4 Set 1 03 Jun 2019
Location: 1 Suanvit Amnath
Sub No.: 1 02-02-2019
Write By: 1 Natthapong T.

NO	Work place	Progress	Approved	Detail
1	Platform for cyclone 3 set install	100%	100%	2 Platform and 3 set cyclone to install. Structure of platform for cyclone to be 400 mm wide.
2	Cyclone 3 set install	100%	100%	2 Cyclone and 3 set cyclone to install. Structure, vent for the cyclone to be 400 mm wide.
3	Site BP 250 assembly & install	100%	100%	Install for assembly and install.
4	Lift Unloading	100%	100%	Install for unloading.
5	Platform & Chut cyclone 4 set install	100%	100%	Install cyclone & chut. No. 2000 (1 x 1) set and 400 mm wide. Support frame of cyclone to be 400 mm wide.
6	Site BP 300 (1 set) install	100%	100%	Install for BP 300 (1 set) install.
7	Multi roller & Site BP 300-2 install	100%	100%	Install for multi roller & site BP 300-2.
8	Lift Unloading	100%	100%	Install for unloading.
9	Platform 12 bucket elevator of granule install	100%	100%	Install for platform 12 bucket elevator of granule.
10	Platform 12 bucket elevator of granule. Support frame of Granule PLC installation & Granule PLC 3 set install	100%	100%	Install for support frame of Granule PLC installation & Granule PLC 3 set install.
11	Platform for site 1200' of granule	100%	100%	Install for platform for site 1200' of granule.
12	Lift Unloading	100%	100%	Install for unloading.
13	Platform roller roller install	100%	100%	Install for platform roller roller.
14	Platform roller install	100%	100%	Install for platform roller.

PROFESSIONAL INSTALLATION SERVICE
Page 3 of 19



QUALITY CONTROL (QC)

- Raw material certificate report.
- Coating layer thickness inspection.
- Roughness inspection.
- PT Test (liquid penetrant test).
- RT (Radiographic Test).
- Dimension Inspection Report.

INGENIUM CO., LTD. (HEAD OFFICE)
25/38 Moo 4, Bangpalet Mueang,
Bangkok 11000 Thailand
TEL/FAX : (662)117-4619
Email : info@ingenium.co.th
TAX ID : 0125559007264

QUALITY CONTROL
การควบคุมคุณภาพ

ผู้ตรวจ: วิศวกรควบคุมคุณภาพ
Inspection Date: 11/11/2014

No.	Date	Lot	Size (mm)	Material Grade	Chem.	Heat No.	Quantity	Accept	Reject
1	10/24/2014	1001004	100x100x4mm	304	-	100000000100	1700	Accept	-
2	10/24/2014	1001004	100x100x4mm	304	-	100000000100	1700	Accept	-

Note: วิศวกรควบคุมคุณภาพ - Incharge

Approved by: In-charge (ชื่อและนามสกุล) วิศวกรควบคุมคุณภาพ

Approved by: QC Supervisor (ชื่อและนามสกุล) วิศวกรควบคุมคุณภาพ

Approved by: Mechanical Manager Incharge (ชื่อและนามสกุล) วิศวกรควบคุมคุณภาพ

มิลล์เซอร์ติฟิเคต
MILL CERTIFICATE

SS DAIRY TUBE 154mm*2mm*6M

Item	Value	Unit	Remarks
Material	304		
Grade	304		
Size	154mm*2mm*6M		
Heat No.	100000000100		
Quantity	1700		

Test Result

Item	Value	Unit	Remarks
Yield	205	MPa	
Tensile	520	MPa	
Elongation	40	%	
Reduction of Area	60	%	
Hardness	100	HV	

INGENIUM CO., LTD. (HEAD OFFICE)
25/38 Moo 4, Bangpalet Mueang,
Bangkok 11000 Thailand
TEL/FAX : (662)117-4619
Email : info@ingenium.co.th
TAX ID : 0125559007264

QUALITY CONTROL
Dimension Inspection Report

ผู้ตรวจ: วิศวกรควบคุมคุณภาพ
Inspection Date: 10/12/2014

Customer: วิศวกรควบคุมคุณภาพ

Project Name: วิศวกรควบคุมคุณภาพ

Drawing No.: 02111112

Part Name: วิศวกรควบคุมคุณภาพ

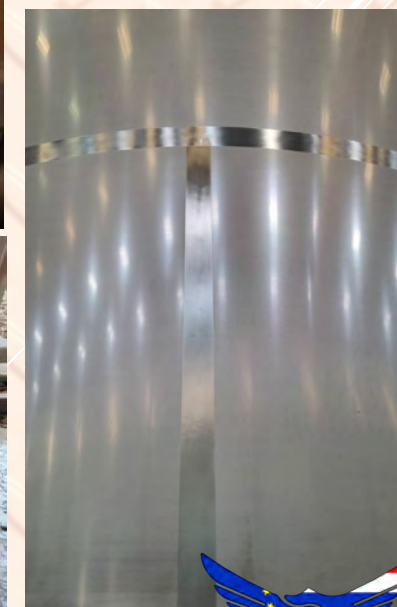
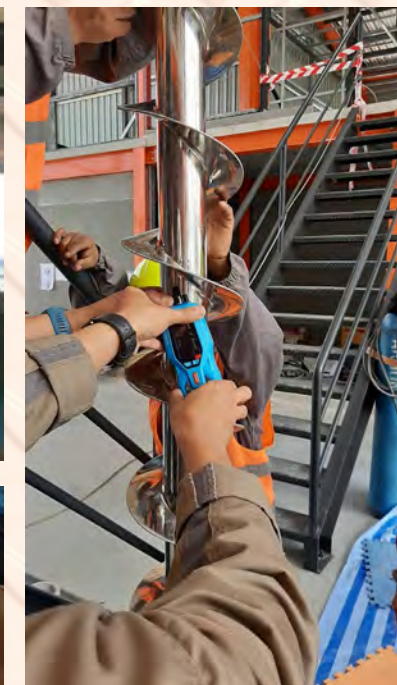
มิลล์เซอร์ติฟิเคต
MILL CERTIFICATE

SS DAIRY TUBE 154mm*2mm*6M

Item	Value	Unit	Remarks
Material	304		
Grade	304		
Size	154mm*2mm*6M		
Heat No.	100000000100		
Quantity	1700		

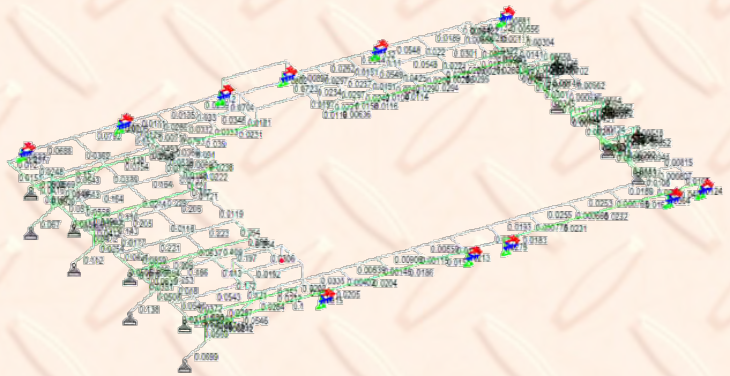
Test Result

Item	Value	Unit	Remarks
Yield	205	MPa	
Tensile	520	MPa	
Elongation	40	%	
Reduction of Area	60	%	
Hardness	100	HV	



ENGINEERING CALCULATION

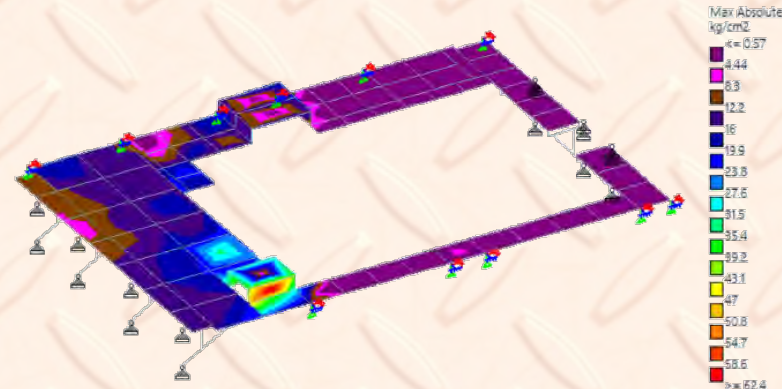
- Steel structure Strength Calculation Report (By STAAD.Pro)



Steel design ratio of steel platform (Overall < 1.00 Pass)

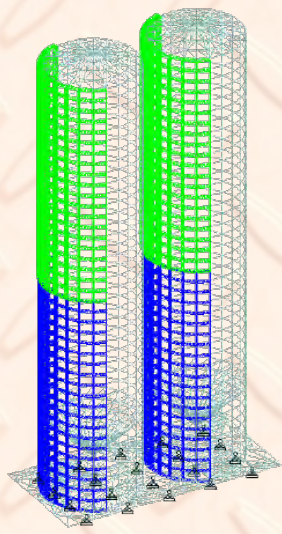
No	Steel size	Type of member	Steel design ratio	Result
1	H-250x125x6x9 mm.	Main beam	0.264	< 1.00 (Pass)
2	[-100x50x5x7.5 mm.	Sub beam	0.252	< 1.00 (Pass)
3	H-100x100x6x8 mm.	Bracing	0.409	< 1.00 (Pass)

Steel design ratio detail by property



Checked plate 4.5 mm. stress, maximum = 62.4 kg/cm² < 0.6fy = 0.6x2,400 = 1,440 kg/cm² (Pass)

Wind pressure
 H=0-10 m. 80 kg/m²
 H=10-20 m. 80 kg/m²
 Sphere coefficient 0.70



Wind load input

Node	L/C	Horizontal Fx kg	Vertical Fy kg	Horizontal Fz kg	Moment Mx kg-m	My kg-m	Mz kg-m
Max Fx	28	102 DL+0.85WATER+0.7WIND	5513.888	21263.916	2.307	0.000	0.000
Min Fx	38	101 DL+0.85WATER	-4806.100	18612.547	-1.892	0.000	0.000
Max Fy	26	102 DL+0.85WATER+0.7WIND	5513.888	21263.916	2.307	0.000	0.000
Min Fy	37	101 DL+0.85WATER+0.7WIND	-3091.326	6428.824	-473.100	0.000	0.000
Max Fz	46	102 DL+0.85WATER+0.7WIND	1772.498	20063.217	4948.818	0.000	0.000
Min Fz	30	102 DL+0.85WATER+0.7WIND	1788.884	20020.185	-4937.288	0.000	0.000
Max Mx	26	101 DL+0.85WATER	4806.100	18612.547	1.892	0.000	0.000
Min Mx	26	101 DL+0.85WATER	4806.100	18612.547	1.892	0.000	0.000
Max My	26	101 DL+0.85WATER	4806.100	18612.547	1.892	0.000	0.000
Min My	26	101 DL+0.85WATER	4806.100	18612.547	1.892	0.000	0.000
Max Mz	28	101 DL+0.85WATER	4806.100	18612.547	1.892	0.000	0.000
Min Mz	28	101 DL+0.85WATER	4806.100	18612.547	1.892	0.000	0.000

Summary reaction force in bolt (Load from Silo calculation report)

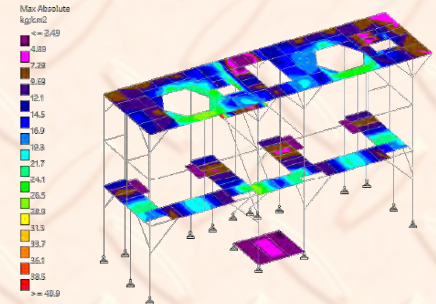
Bolt M24 (SD40), Allowable shear = 0.4x4,000xA = 0.4x4,000x4.908 = 7,853.98 > 5,513.88 kg. (Pass)

Block shear check = 0.4x2,400x(2.8x(15.0-2.7)) = 33,062.4 kg. > 5,513.88 kg. (Pass)

Use 24-M24 Anchor bolt (Strength of anchor bolt = 4,000 ksc. As minimum)

No.	Member	Type of structure	Steel design ratio	Result
1	[1]-150x150x8mm.	Main column	0.867	< 1.00 Pass
2	[1]-150x150x8mm.	Main beam	0.481	< 1.00 Pass
3	[1]-100x100x5mm.	Main beam	0.880	< 1.00 Pass
4	[1]-100x100x5mm.	Bracing	0.355	< 1.00 Pass
5	L-80x80x6 mm.	Sub beam	0.538	< 1.00 Pass
6	[1]-100x100x5mm.	Sub beam	0.414	< 1.00 Pass
7	[1]-150x150x8mm.	Stair beam	0.348	< 1.00 Pass

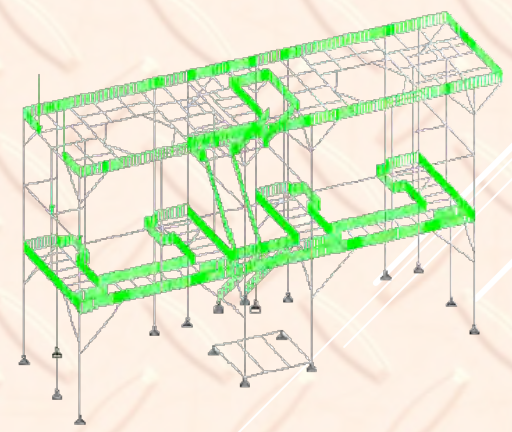
Steel design ratio detail



Stainless checkered plate 4 mm. stress, maximum = 40.9 kg/cm² < 0.6fy = 0.6x2,400 = 1,440 kg/cm² (Pass)

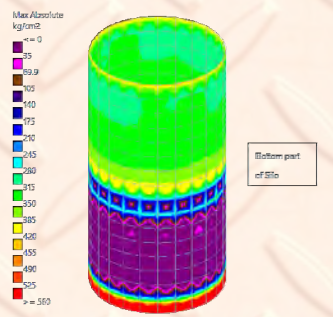
Node	L/C	Horizontal Fx kg	Vertical Fy kg	Horizontal Fz kg	Moment Mx kg-m	My kg-m	Mz kg-m
Max Fx	23	101 DL+LL	331.043	7330.867	479.530	0.000	0.000
Min Fx	22	101 DL+LL	-335.595	8528.191	-518.467	0.000	0.000
Max Fy	431	101 DL+LL	2.348	245.622	-1.160	0.000	0.000
Min Fy	149	101 DL+LL	-0.279	977.096	626.058	0.000	0.000
Max Fz	22	101 DL+LL	-335.595	8528.191	-518.467	0.000	0.000
Min Fz	1	101 DL+LL	33.322	2099.103	85.361	0.000	0.000
Max Mx	1	101 DL+LL	33.322	2099.103	85.361	0.000	0.000
Min Mx	1	101 DL+LL	33.322	2099.103	85.361	0.000	0.000
Max My	1	101 DL+LL	33.322	2099.103	85.361	0.000	0.000
Min My	1	101 DL+LL	33.322	2099.103	85.361	0.000	0.000
Max Mz	1	101 DL+LL	33.322	2099.103	85.361	0.000	0.000
Min Mz	1	101 DL+LL	33.322	2099.103	85.361	0.000	0.000

Support reaction summary



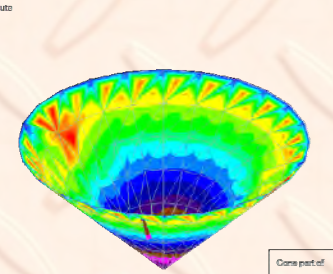
Self weight
 Stainless steel Checkered plate 4 mm. 31.5 kg/m² (0.215 kN/m²)
 Handrail 30 kg/m² (0.3 kN/m²)
 Reaction from walking

Dead load input



Bottom part of Silo

Stainless steel plate 8 mm. stress, maximum = 593 kg/cm² < 0.6fy = 0.6x2,400 = 1,440 kg/cm² (Pass)



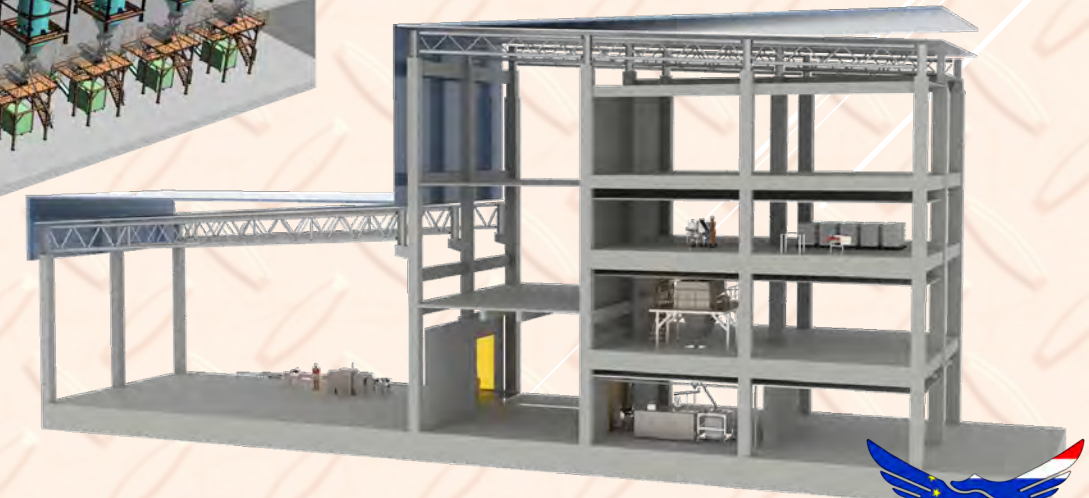
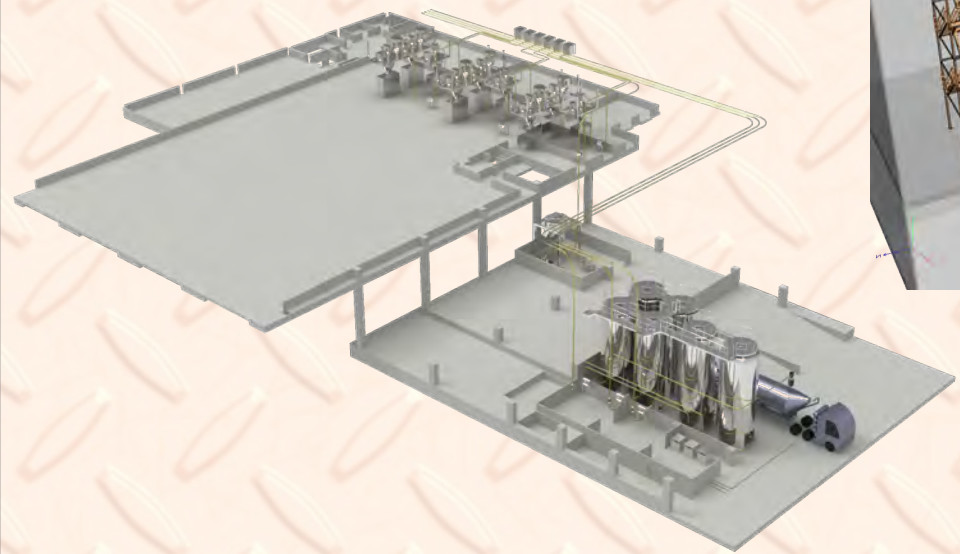
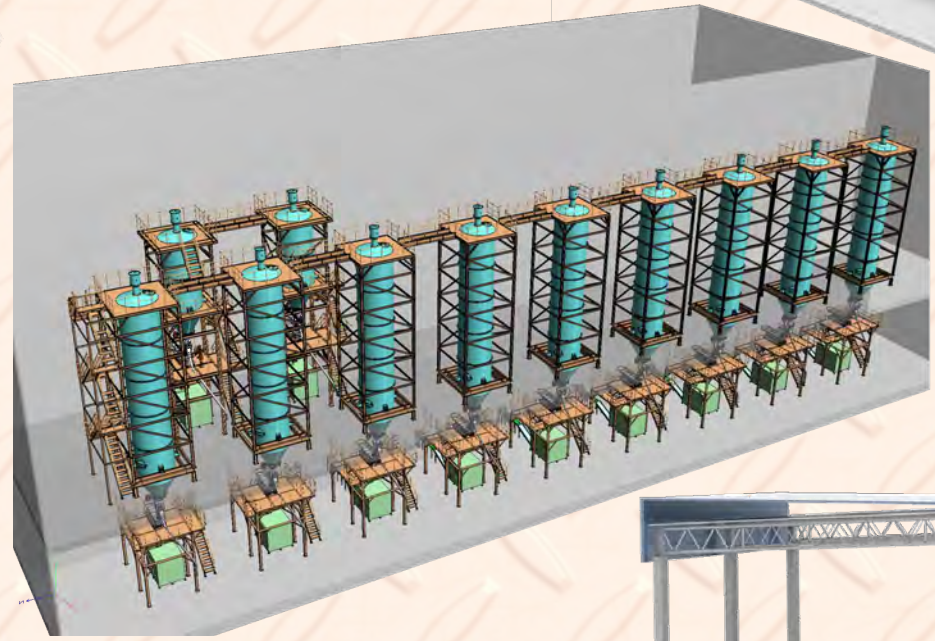
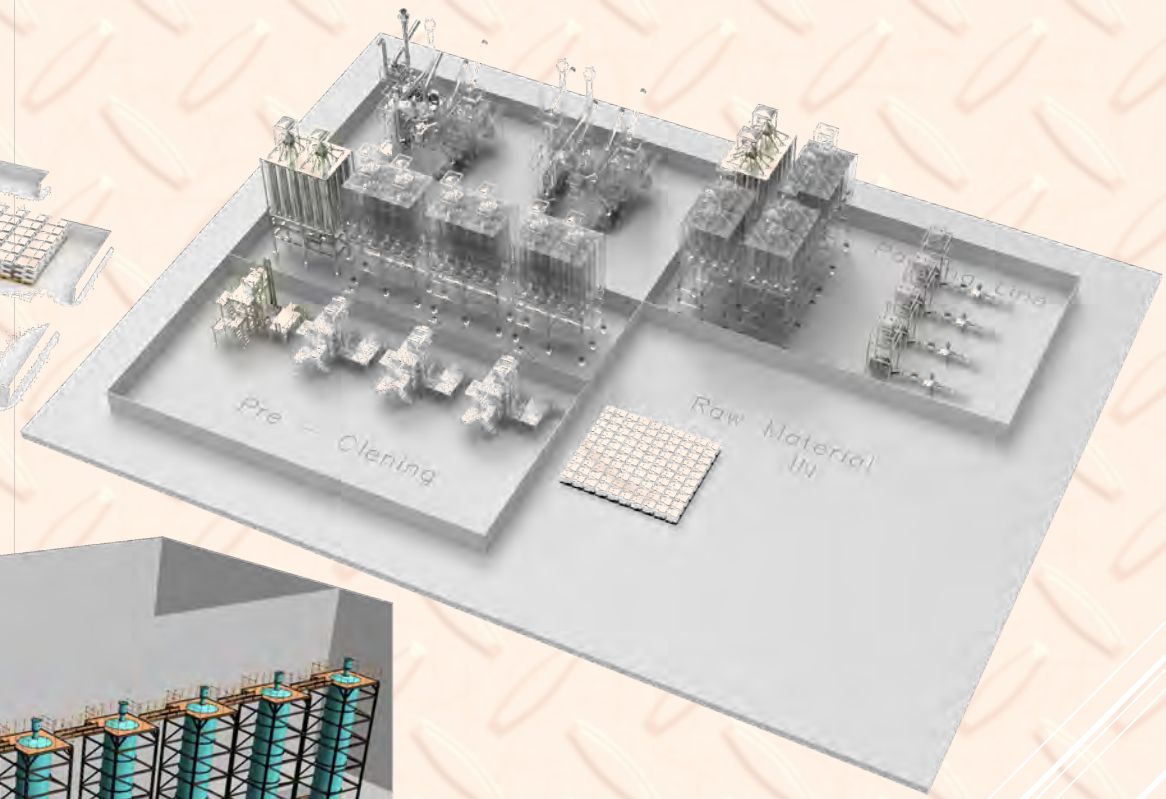
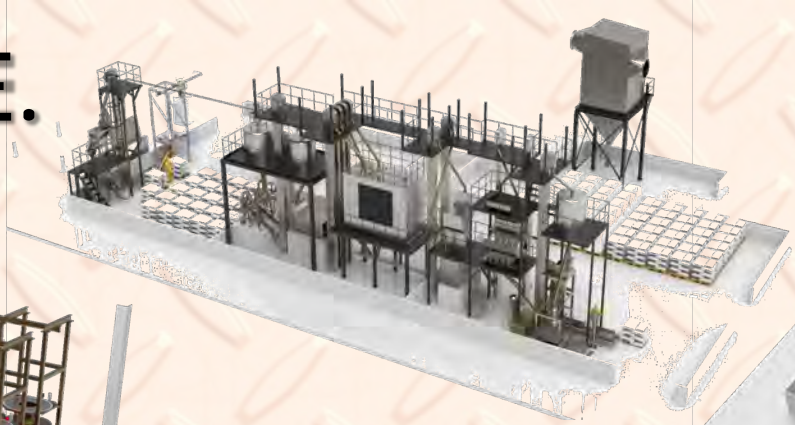
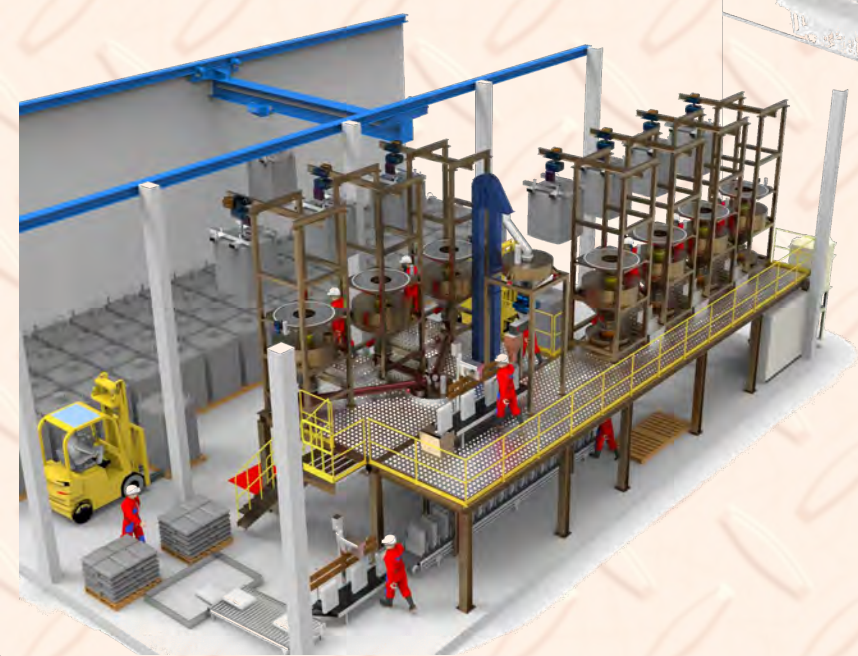
Cone part of Silo

Stainless steel plate 6 mm. stress, maximum = 640 kg/cm² < 0.6fy = 0.6x2,400 = 1,440 kg/cm² (Pass)



JOB REFERENCE.

3D Concept Design



OUR PRODUCT.

Industrial Sieving & Screening Equipment.



farleygreene

**ULTRA HYGIENIC
ULTRA TOUGH.**


Introducing the Easilift Ultra, the latest sack tip screener designed to guarantee your ingredient safety.




SM sievmaster
by farleygreene

Rota Range

Powerful, compact, non-vibratory machines for high volume bulk sifting.



R90 R180 R360

SM sievmaster
by farleygreene



Product Specification

Slimline Range

SM 550-FF

Vibratory Check Screener in 550mm Diameter

The 550-FF model can be used as a simple means of check sieving into bins or containers. It is primarily designed to be fed under gravity within new or existing production lines, to screen product into a static weigh bin, big bag, convey line or hopper.

The basic unit will locate within a confined area to provide for retrospective fitting into systems that previously had no sieving equipment. Used with the optional wheeled base assembly, it makes an ideal arrangement to sieve ingredients in small or large batch volumes.



SM sievmaster
by farleygreene



BY INDUSTRIES



Food & Drink



Pharma



Chemical



Nutriceutical



Reclamation & Recycling



Additive Manufacturing

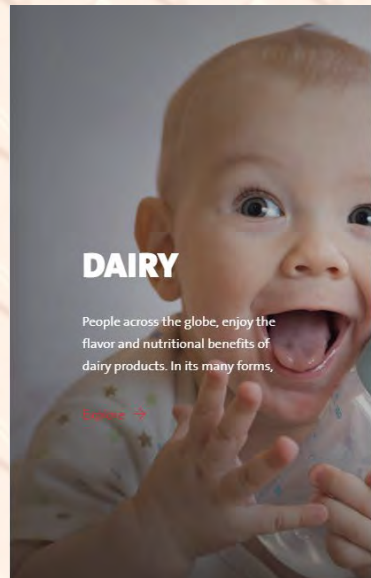
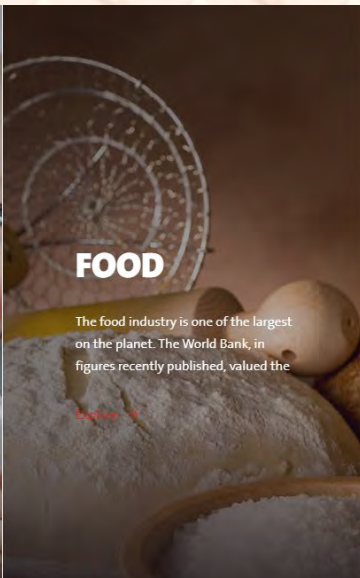

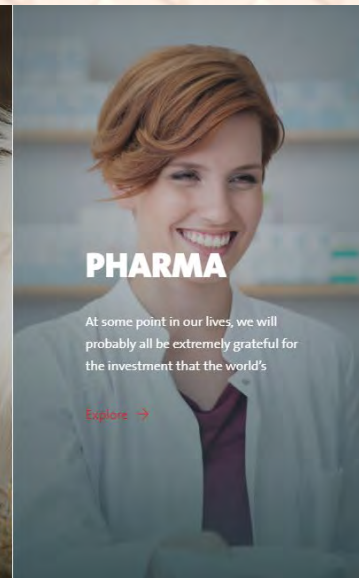



Copyright © 2015 All Rights Reserved. - INGENIUM CO., LTD

OUR PRODUCT.


High-end Rotary Valves & Diverter.

DMN-WESTINGHOUSE has been designing and manufacturing rotary valves, diverter valves and other related components for the bulk solids handling industry for many years.

 <p>DAIRY</p> <p>People across the globe, enjoy the flavor and nutritional benefits of dairy products. In its many forms,</p> <p>Explore →</p>	 <p>FOOD</p> <p>The food industry is one of the largest on the planet. The World Bank, in figures recently published, valued the</p> <p>Explore →</p>	 <p>ANIMAL FEED</p> <p>The food industry continues to grow. According The UN Food and Agricultural Organization, the world</p> <p>Explore →</p>	 <p>PHARMA</p> <p>At some point in our lives, we will probably all be extremely grateful for the investment that the world's</p> <p>Explore →</p>
			

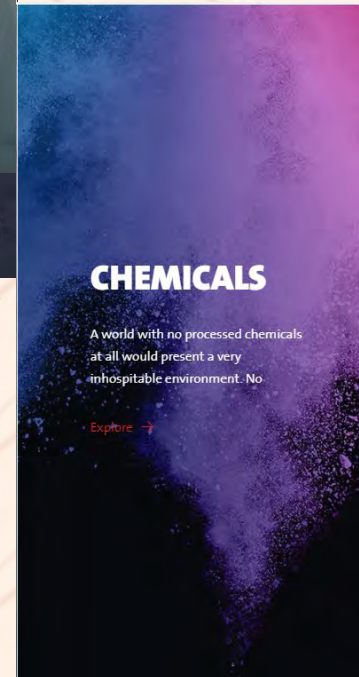
Diverter by DMN-WESTINGHOUSE come in many types and sizes, suitable for a specific use or a variety of applications. The extensive diverter range comprises a series of plug diverters (dual pipe, single pipe, CIP suitable, gravity) and tube diverters (2-14 ports), some of which are also available in USDA Dairy accepted version. For the mineral industry, the BTD ball type diverter with its rugged design is very suitable for handling abrasive products.





ROTARY VALVES

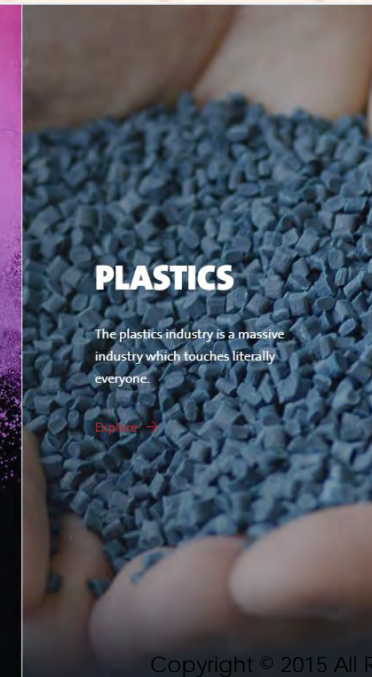
Our rotary valves and diverters have a well-established reputation for being able to handle all kinds of dry powders and granular materials, such as sugar, cocoa, starch, flour, chemical ingredients, lime powder, china clay, fly ash and wood chips. A number of standard rotary valves can be upgraded, depending on the product handled. The housing can be made from Ni-hard casting when working with abrasive products, such as fly ash. Or the inside of the housing can be coated with chromium or tungsten when working with mild abrasive products. What's more, the valve can be fitted with a special rotor when processing sticky products or starch, for example.



CHEMICALS

A world with no processed chemicals at all would present a very inhospitable environment. No

[Explore →](#)



PLASTICS

The plastics industry is a massive industry which touches literally everyone.

[Explore →](#)



MINERALS

Thanks to carbon dating, scientists are reasonably sure that around 43,000 years ago, our ancestors

[Explore →](#)



OUR PRODUCT.

High-end Rotary Valves & Diverter.



SERVICE & MAINTENANCE

24/7 SUPPORT

DMN-WESTINGHOUSE provides preventive maintenance, for example when it comes to fine-tuning rotor blades and determining tolerances, etc. →



What does this mean for you as a customer?

- ✓ Annual inspection and maintenance
- ✓ 24/7 service, 365 days a year
- ✓ Serviceman within 24 hours on site in case of a defect
- ✓ Advise on increasing the maintenance interval
- ✓ Smaller chance of a production standstill due to breakdowns
- ✓ Also possible with delivery through a retailer
- ✓ Under conditions possible in retroaction





S.W.L 300 KG

**WE ARE
OPEN**
Now

DMN | CERTIFIED
WESTINGHOUSE | SERVICE
PARTNER



AFTER SALES / SERVICE AND SUPPORT

**24 HOURS A DAY, 7 DAYS A WEEK, 365 DAYS A YEAR.
OUR SKILLED TECHNICIANS CAN HELP YOU.**



QUALIFIED, VERIFIED, CERTIFIED!



OUR PRODUCT.

BRAMBATI S.p.A.

Brambati specialises in coffee production plants and similar types.

We can supply "turnkey" plants, from the reception of green coffee up to feeding packaging machines, through cleaning, storage, weighing, blending, roasting, conveyance (with either traditional mechanical conveyors or the latest generation of slow conveyors), grinding and degassing.

Our roasters come in a variety of sizes, from 5-7.5Kg/batch (20Kg/h.) to 600Kg/batch (3000Kg/h.). They can be the traditional type (KAR or KAR-S models) or with highly automated design (BR models), allowing for complete flexibility in controlling the coffee roasting process, by adapting the roasting features to the different Customer requirements.



Coffee processing plants



CUSTOMER CARE SERVICE



Brambati specialises in coffee production plants and similar types.

Brambati has introduced a new Customer Care service to provide our customers with quick and efficient assistance worldwide.

Phone line
Our service numbers are
0383 73795 when calling from Italy
+39 0383 73795 when calling from abroad

For quick access to the service, please prepare the following information in advance:

- ✓ Company data
- ✓ Customer code (unique code assigned to each Brambati customer via e-mail)
- ✓ Type of machine/plant with serial number or wiring diagram of reference
- ✓ Contact person to call back
- ✓ Severity of the fault (informational, non-blocking, partially blocking, total block)



Training certificate



OUR PRODUCT.



Vacuum conveyors for bulk powders, granules, and small parts

Piab's vacuum conveying system is a premier powder conveying technology solution. It provides a safe and clean way to handle bulk solids. This includes handling fine dust, abrasive materials, and materials that absorb moisture (hygroscopic) or form bridges. These vacuum powder transfer systems represent an ideal alternative to traditional conveying methods, ensuring no product quality variations while minimizing product loss.

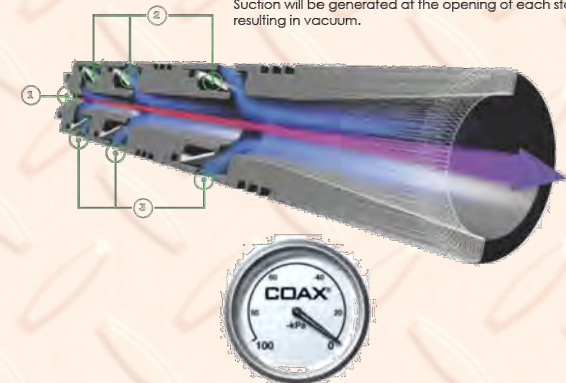
Powder Conveying System for Any Use Case - piFLOW® Vacuum Conveyors by Piab

Piab's vacuum conveying systems lead the industry in powder conveying, delivering versatile and practical solutions for powder conveying applications. Their compact design and unwavering reliability represent the superior choice across diverse sectors. Piab's vacuum conveying systems are optimal powder conveying solutions, offering unparalleled safety and hygiene. Equipped with innovative technology like COAX®, these systems are the epitome of efficiency in vacuum conveying for powder handling. Configurations are straightforward and reliable, using the most energy-efficient way to produce the vacuum. They are available with:

- ✓ ATEX Dust certified, install in zone 21,22
- ✓ ATEX Dust and Gas certified - Conveying granules in explosive dust and gas atmosphere
- ✓ in compliance with FDA
- ✓ with either an ejector-driven vacuum pump or a mechanical pump
- ✓ premium stainless-steel body

The principle

When compressed air (1) passes through the nozzles (2), air is pulled through with the stream of compressed air. Suction will be generated at the opening of each stage (3), resulting in vacuum.



OUR PRODUCT.

Full-stack solution

Full-process services from raw material debagging, silo, dosing, mixing to control systems.

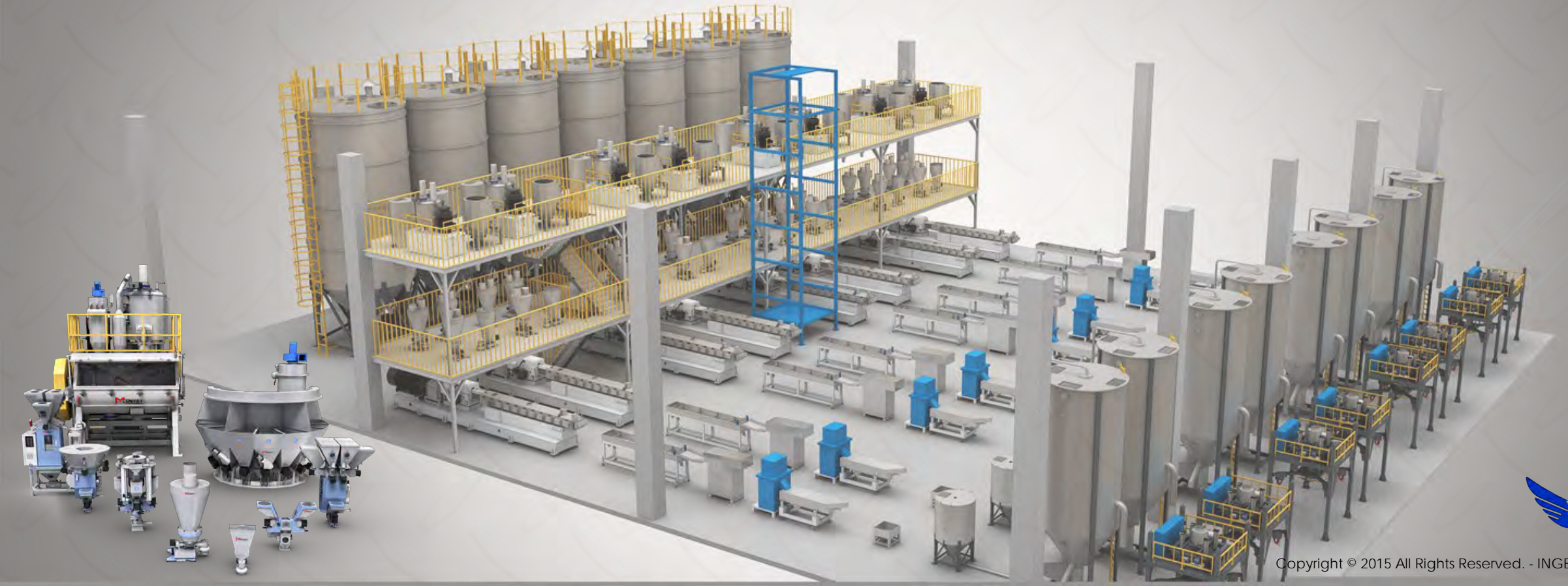


Pipe Extrusion

30 years in plastics pipe R&D

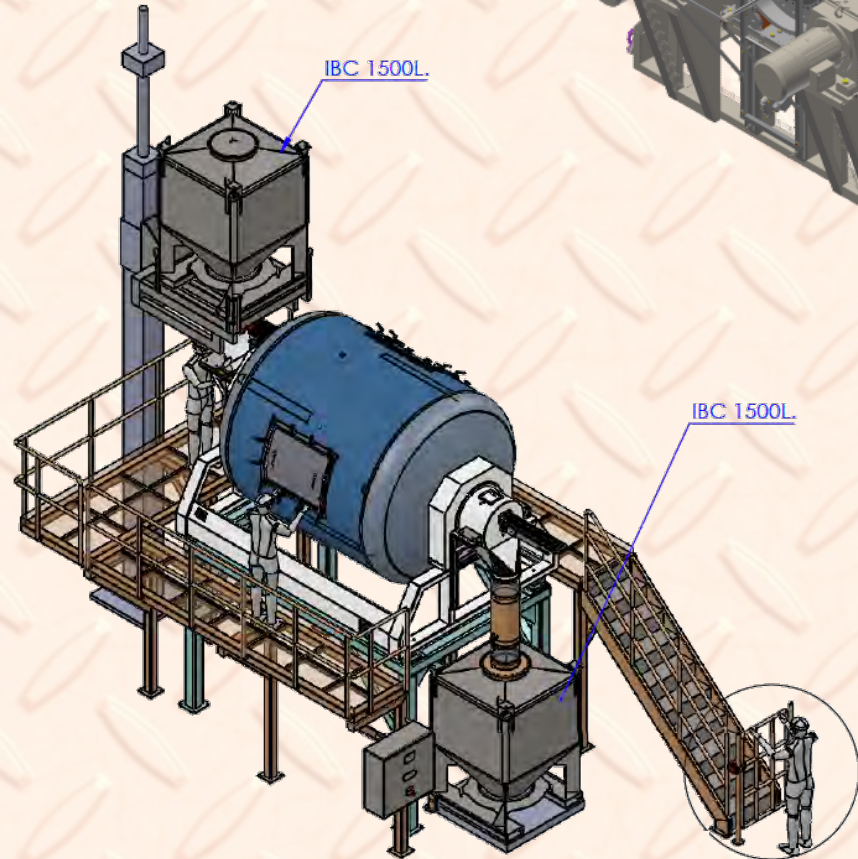
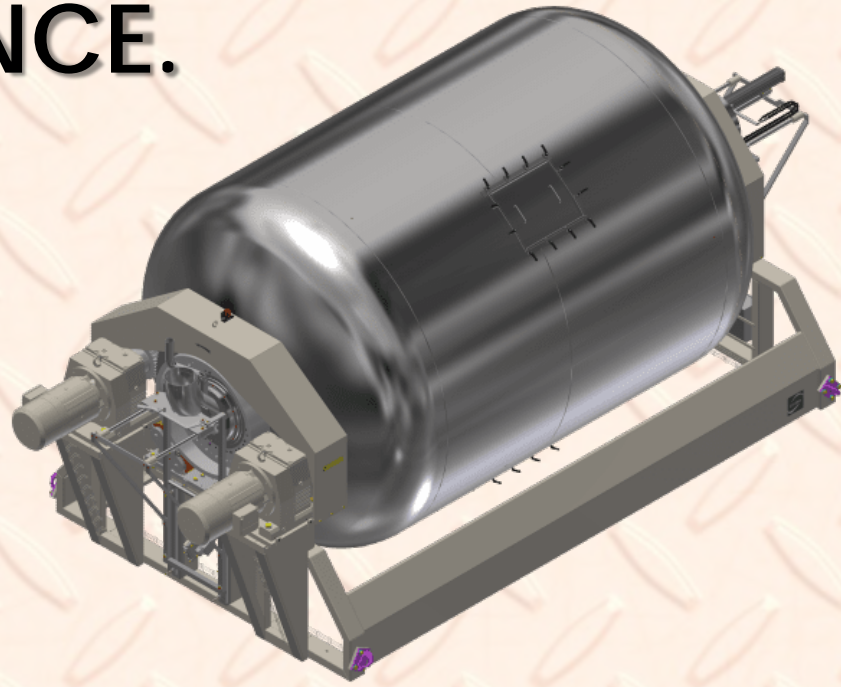
Automation

10 years in materials weighing & compound solution



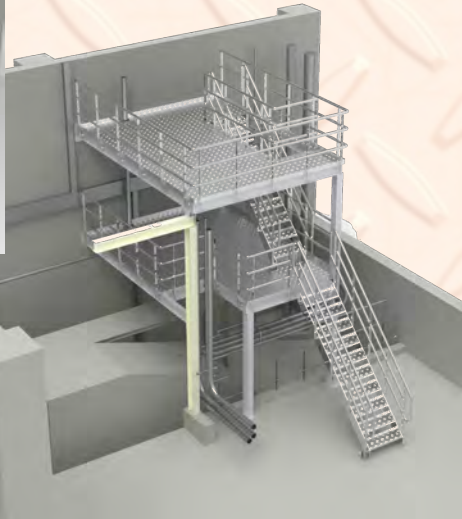
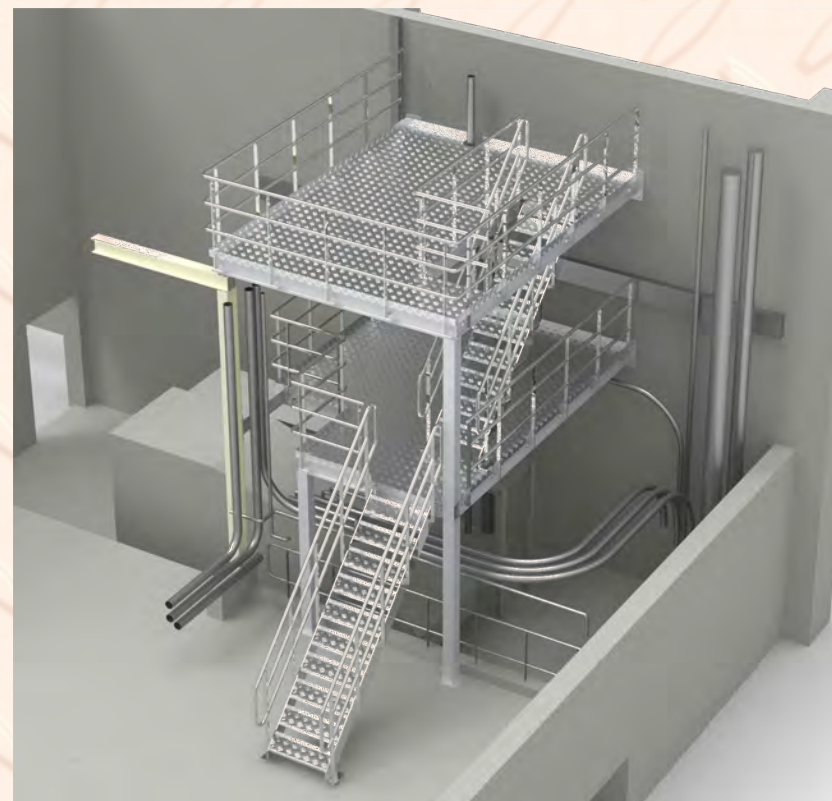
JOB REFERENCE.

Installation Lindor Mixer



JOB REFERENCE.

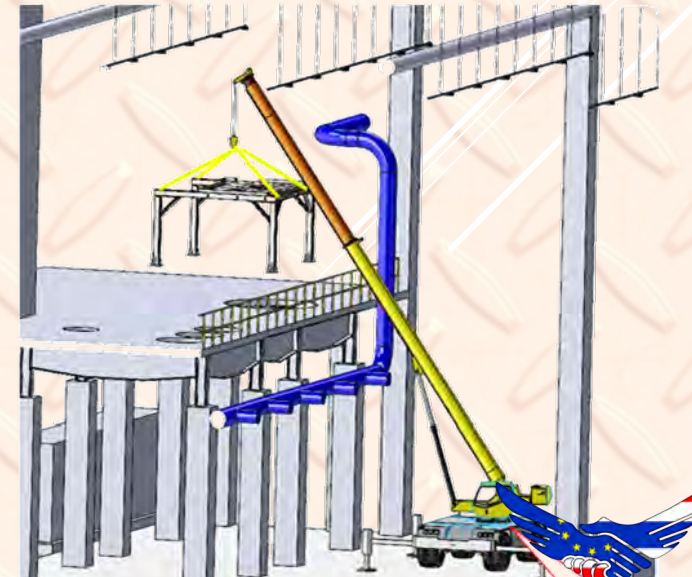
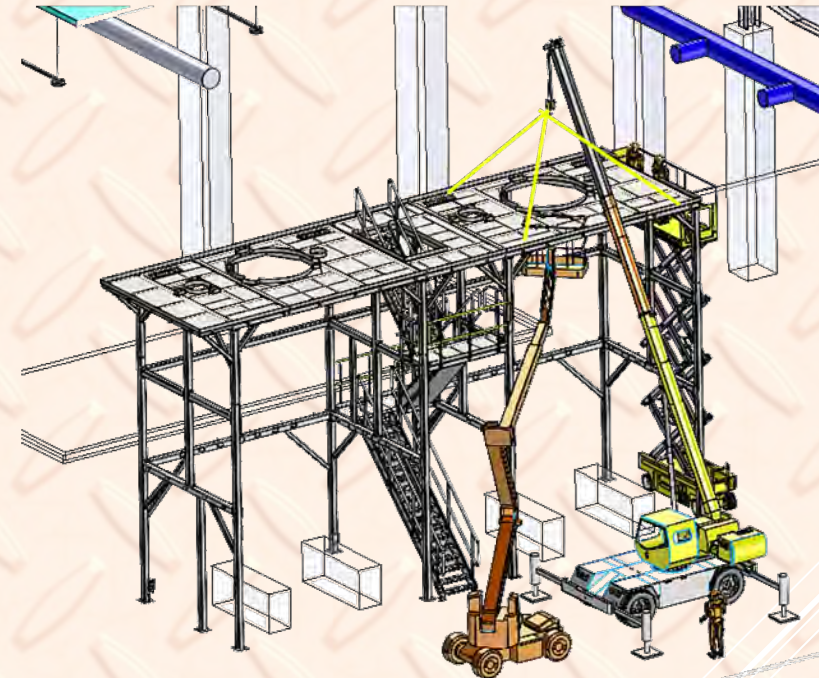
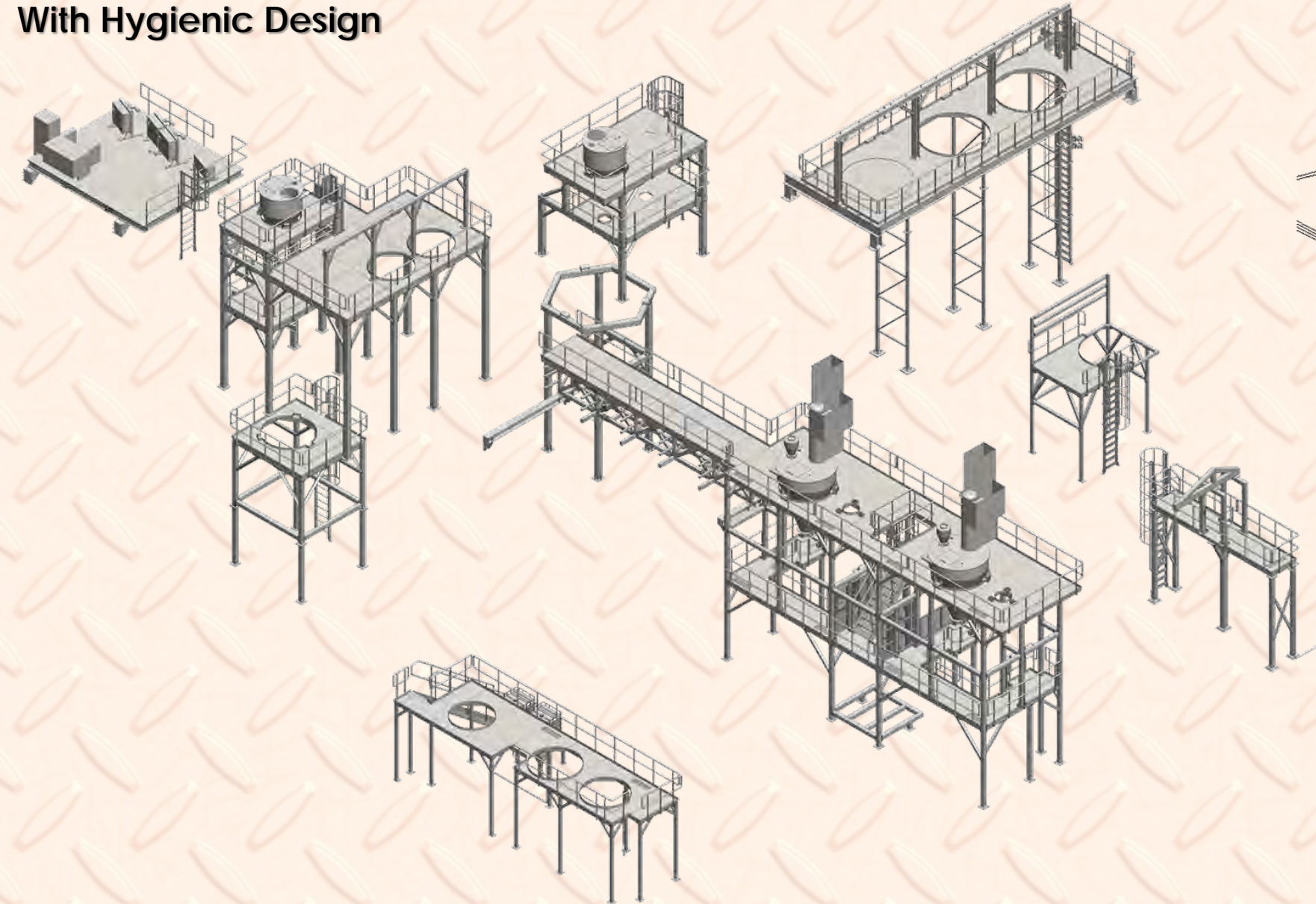
Stainless Platform
With Hygienic Design



JOB REFERENCE.

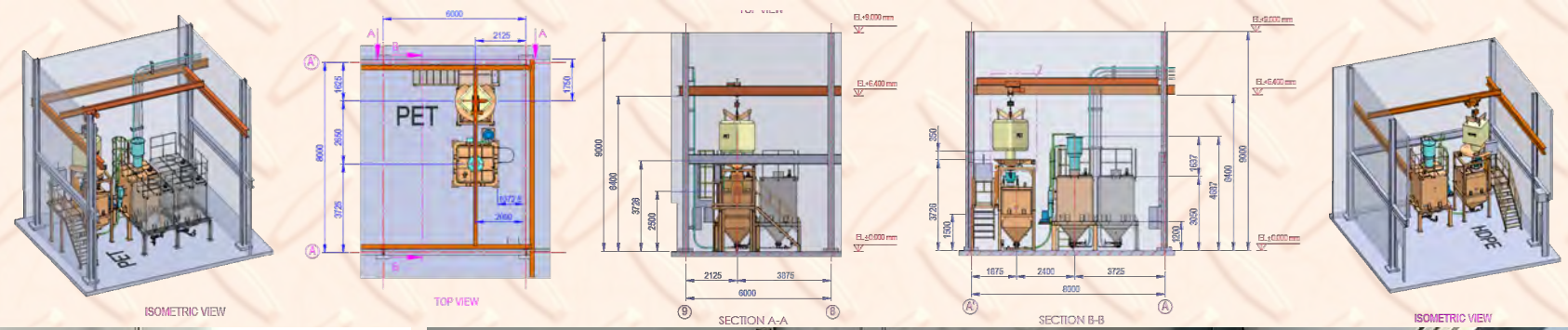
Stainless Platform & Galvanized Steel (Fabrication and Installation.)
With Hygienic Design

Step of work platform installation



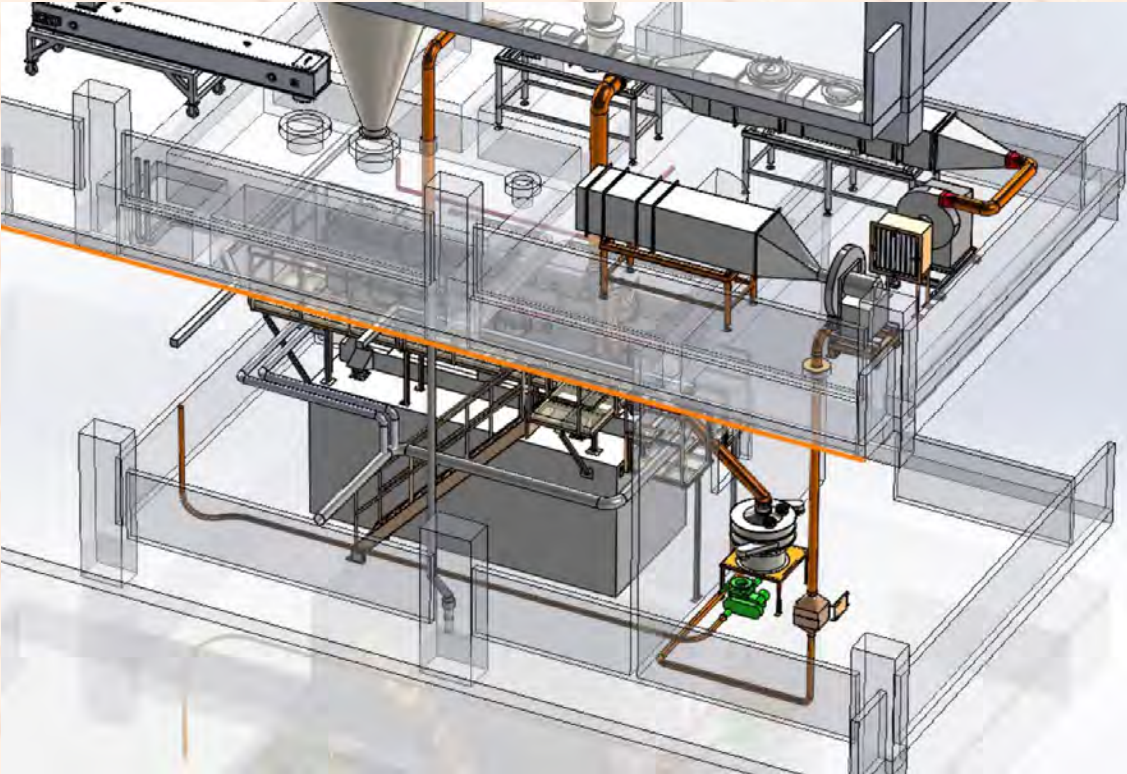
JOB REFERENCE.

Bulk Bag Unloading System



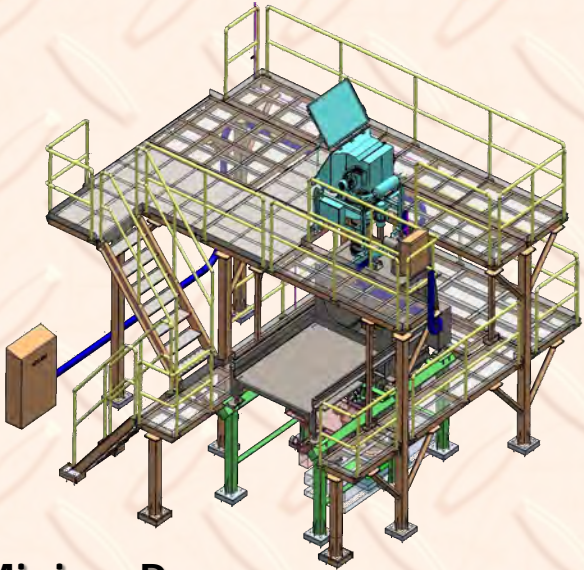
JOB REFERENCE.

Piping Fabrication and Erection Work

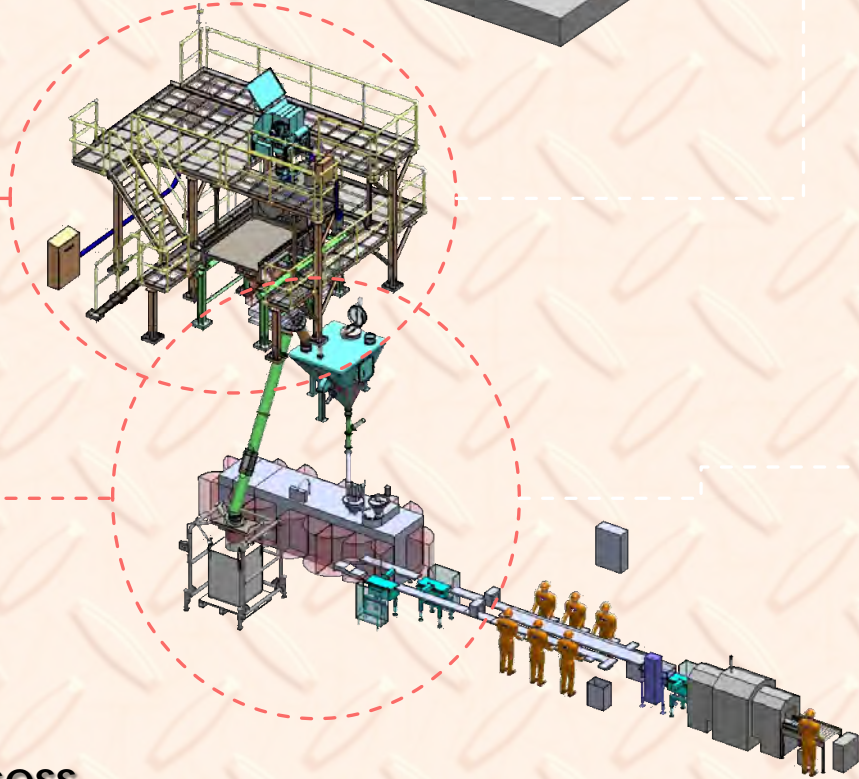
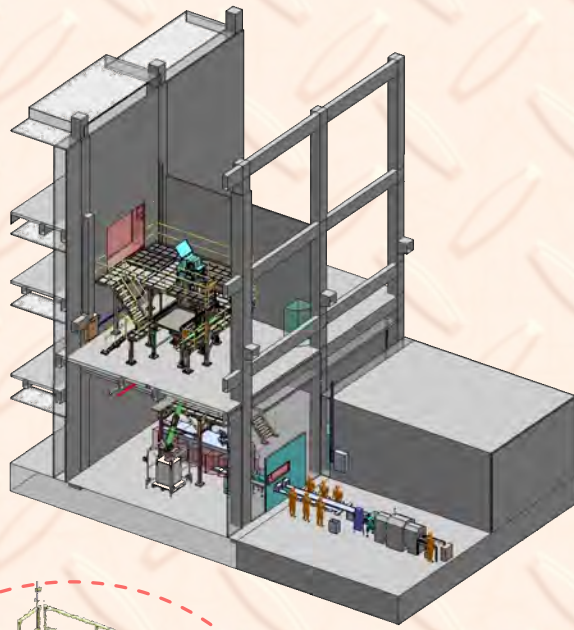


JOB REFERENCE.

Dry Mix – Turnkey Line . 200 Kg / Batch



Mixing Process



Filling Process



FG
farleygreene

DINNISSEN
PROCESS TECHNOLOGY

DMN
WESTINGHOUSE

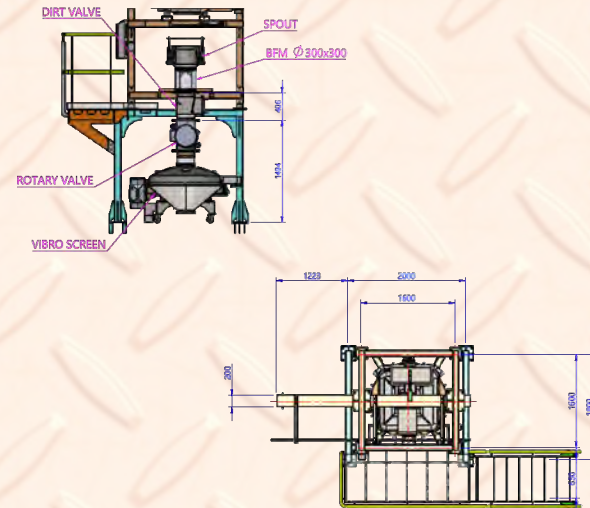
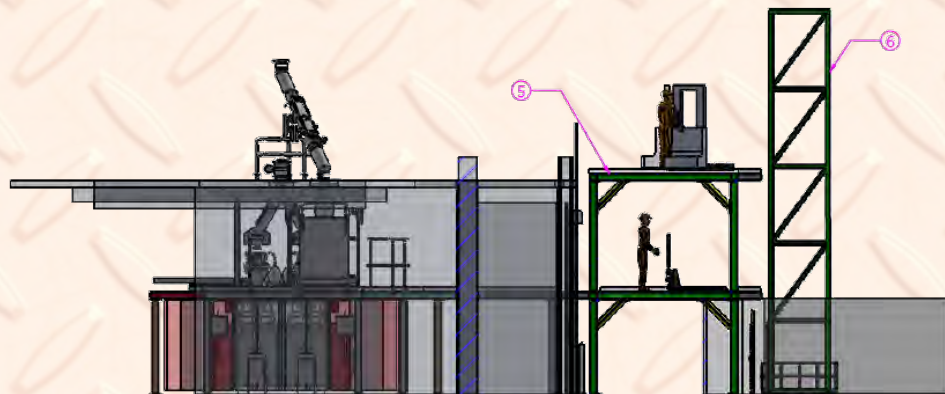
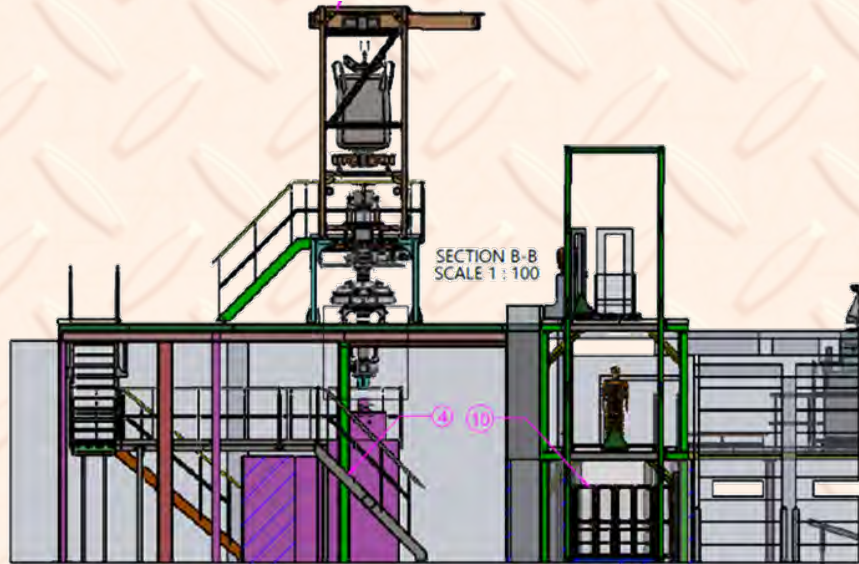


Sachet Packing

ISHIDA

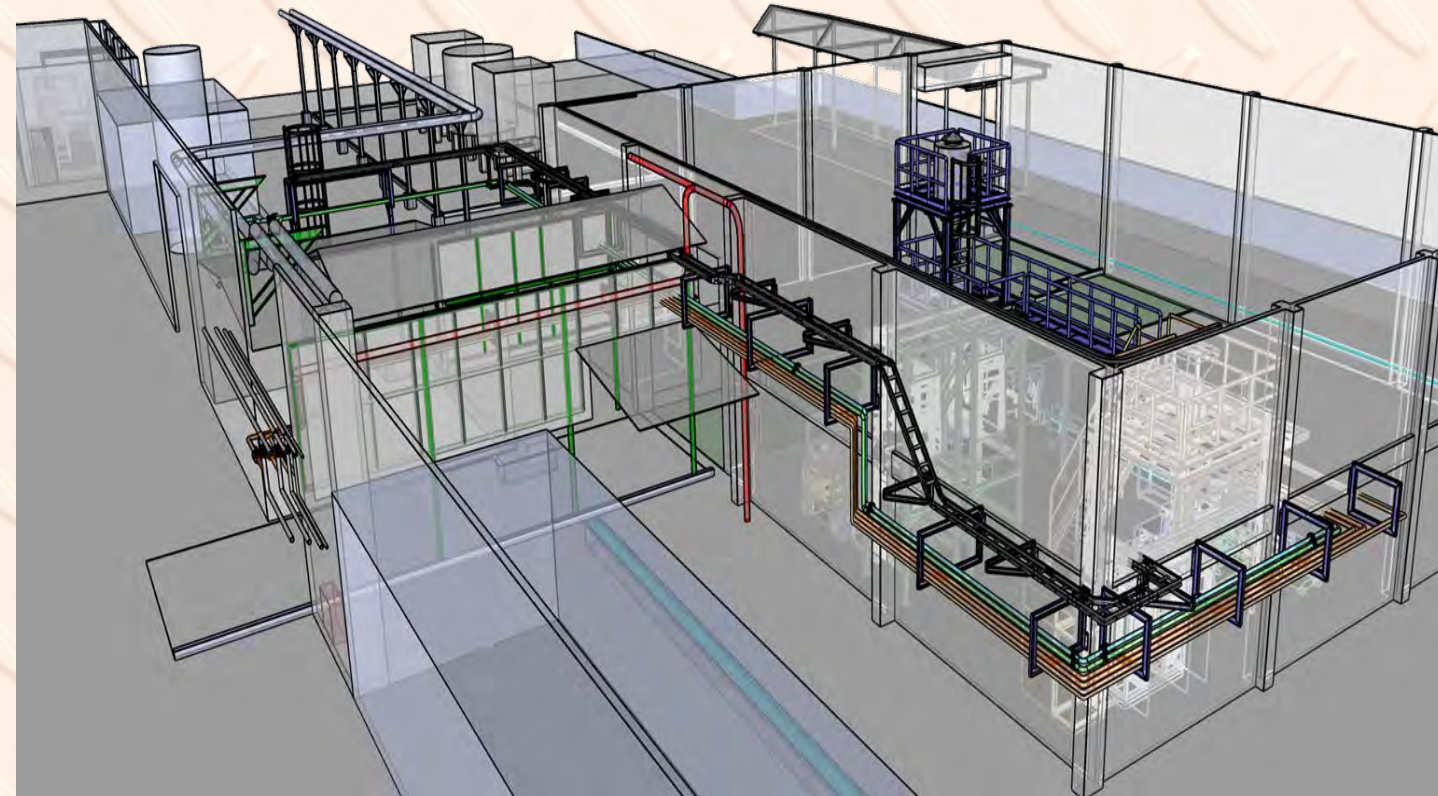
JOB REFERENCE.

Can Line Project



JOB REFERENCE.

Installation Job For
Compounding plastic extrusion lines



JOB REFERENCE.

Big Bag Unloading Station
with Bucket Elevator Transfer System

SUS304
Platform

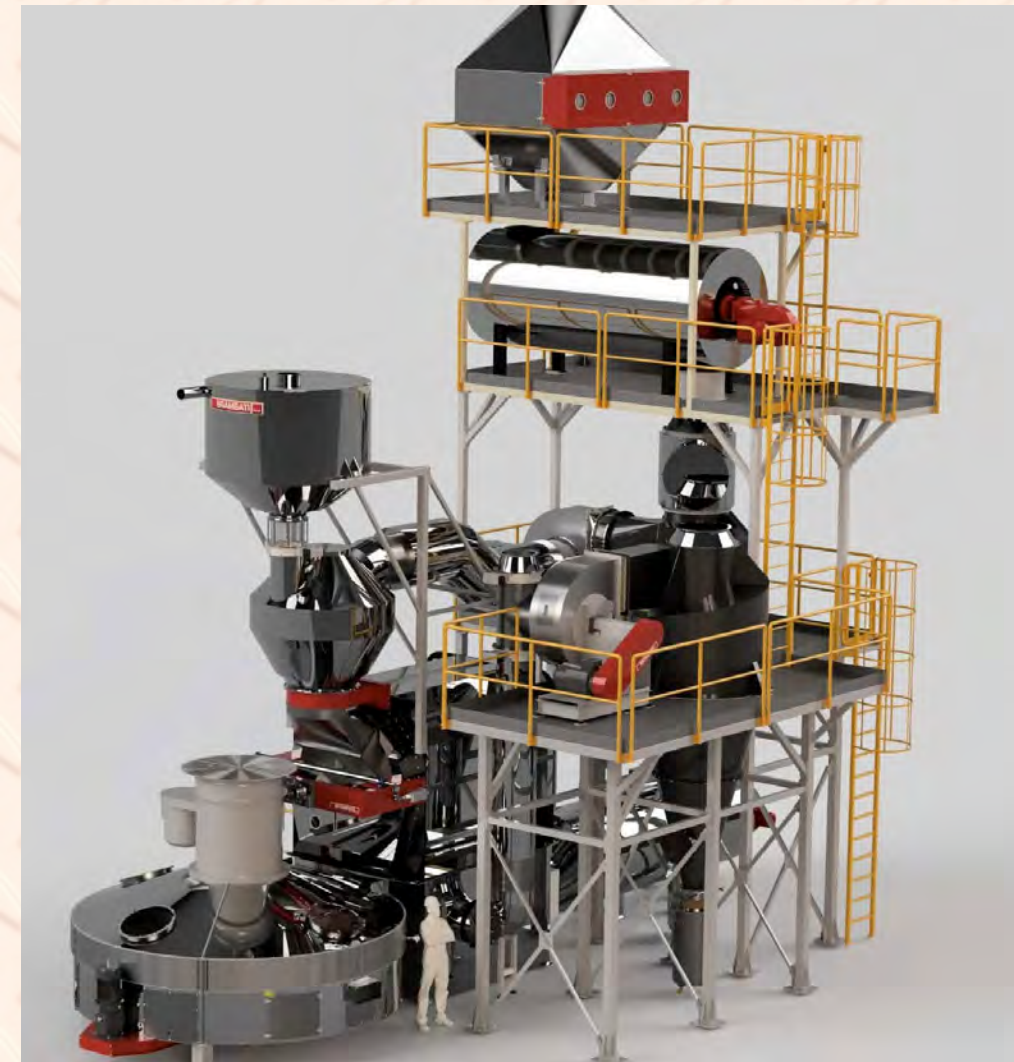


JOB REFERENCE.

BRAMBATI . Design and Supply Main Equipment

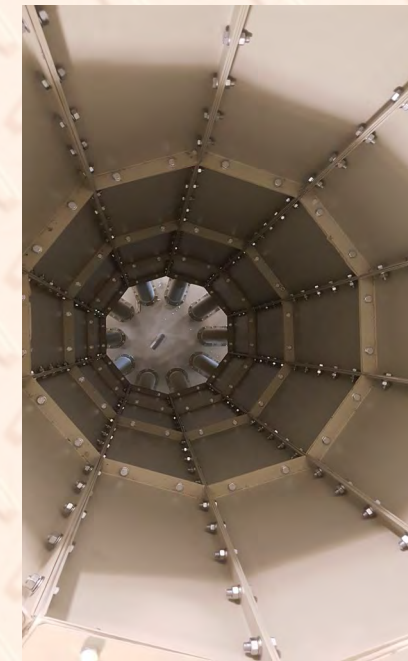
INGENIUM . Supply Local Equipment and Installation work for Coffee Plant

ROASTER MOD. BR3600



JOB REFERENCE.

Installation Work for ME
Platform and Structure Frame

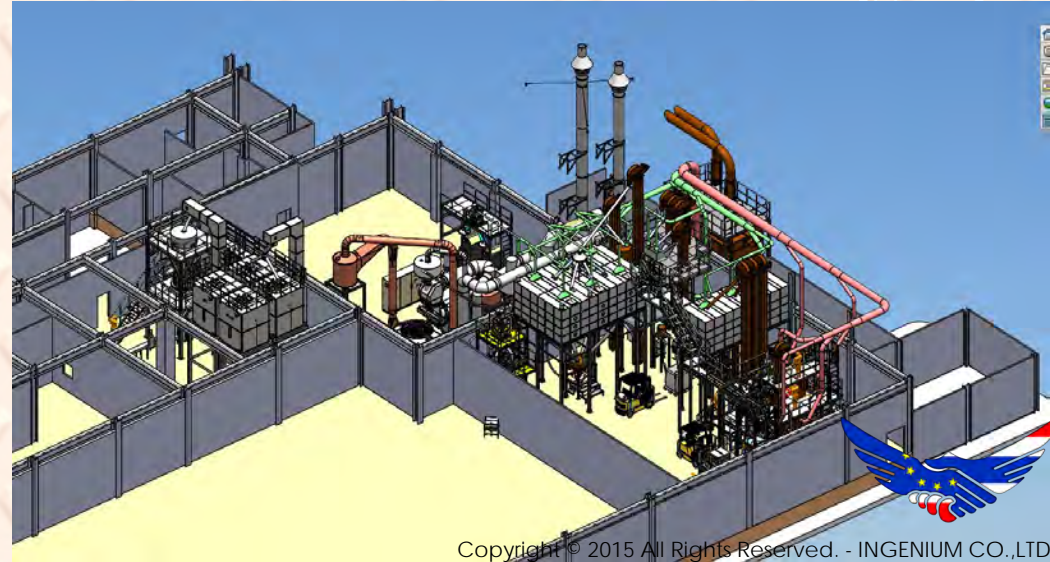
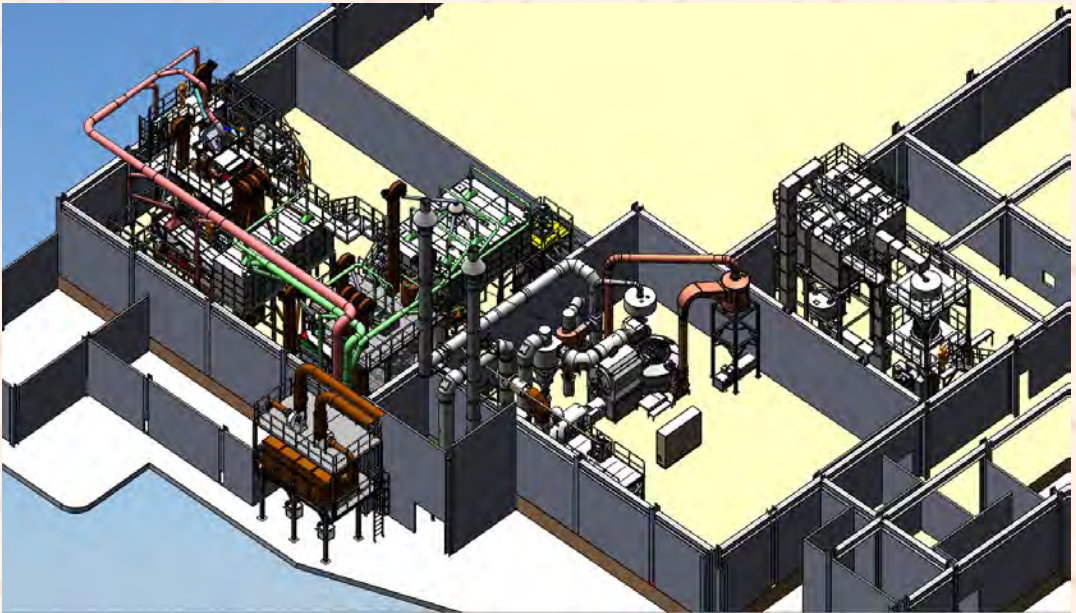
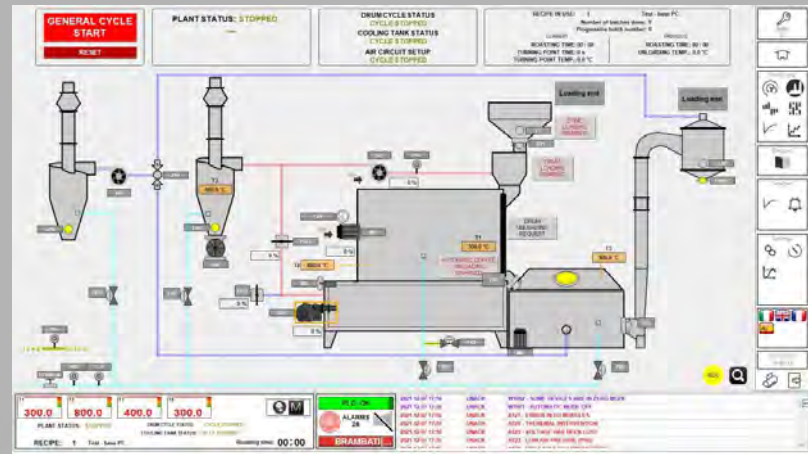


Silo 10 Chamber @ 2 Silo

JOB REFERENCE.

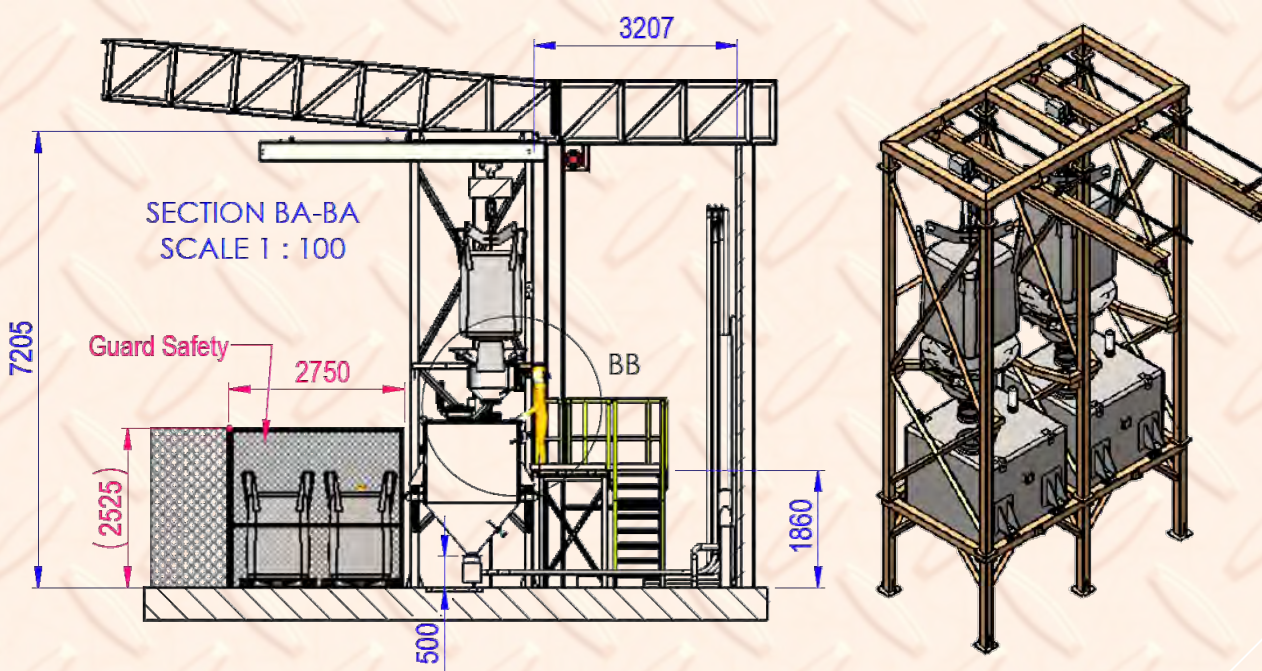
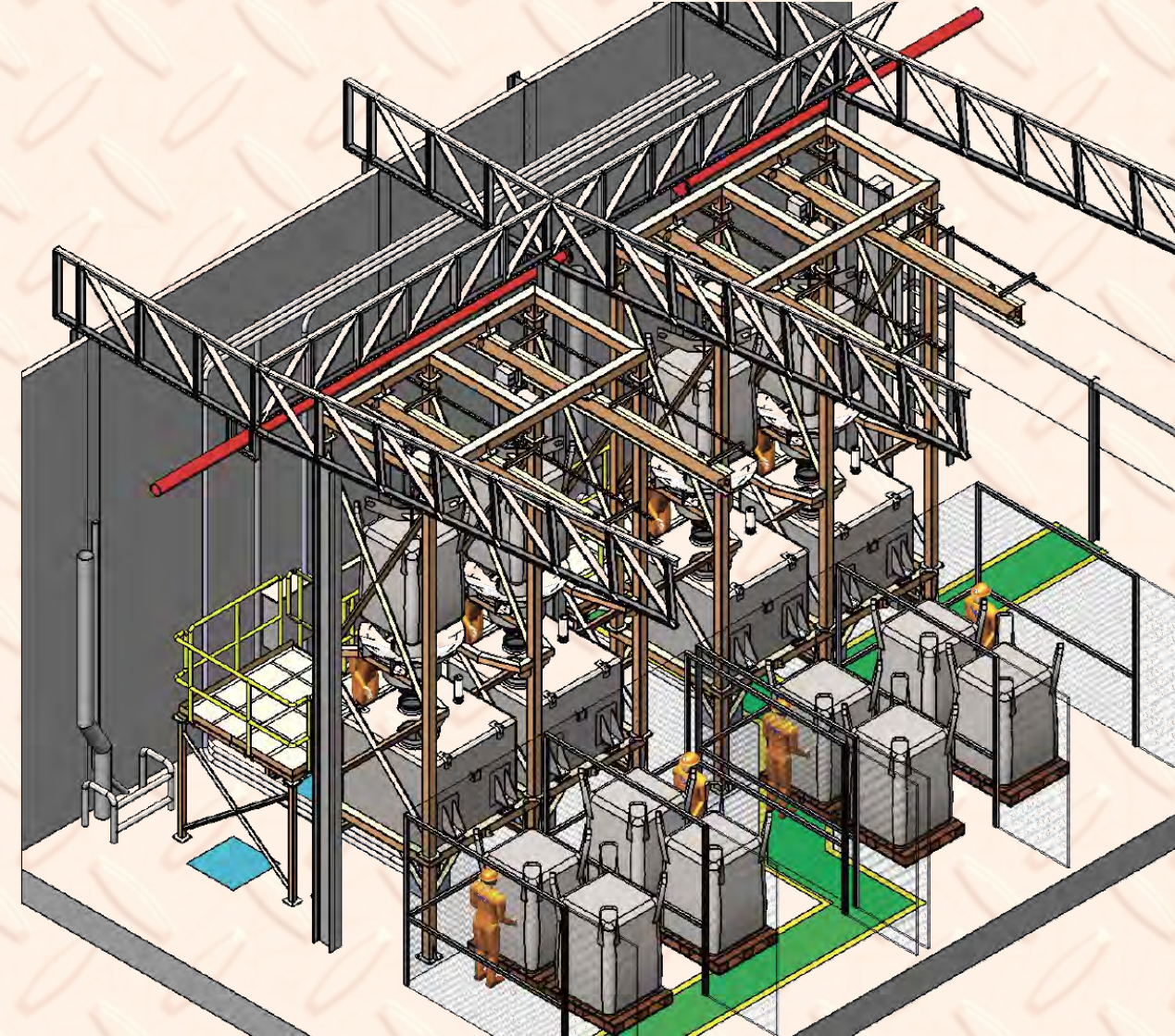
Complete line Coffee Roaster Plant - Installation

ROASTER MOD. KAR 240



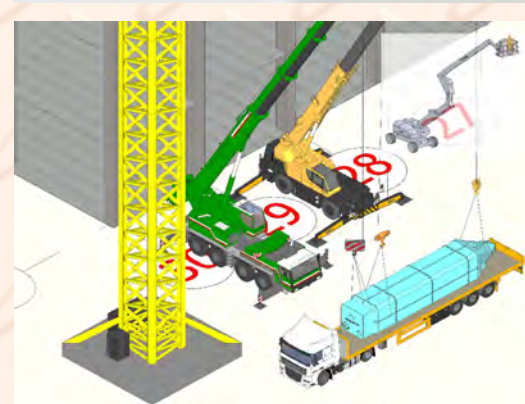
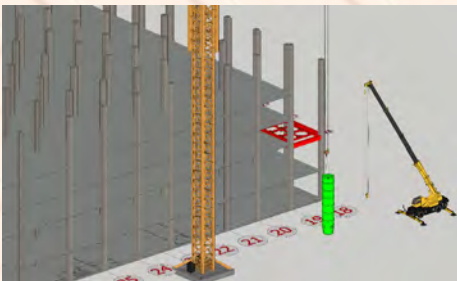
JOB REFERENCE.

Big Bag Station for Bulk Bag



JOB REFERENCE.

Storage Silo Installation Over than 147 Silo



METHOD OF STATEMENT of....Silo lifting & Installation

Square Silo Installation Work

Copyright © 2015 All Rights Reserved. - INGENIUM CO.,LTD



JOB REFERENCE.

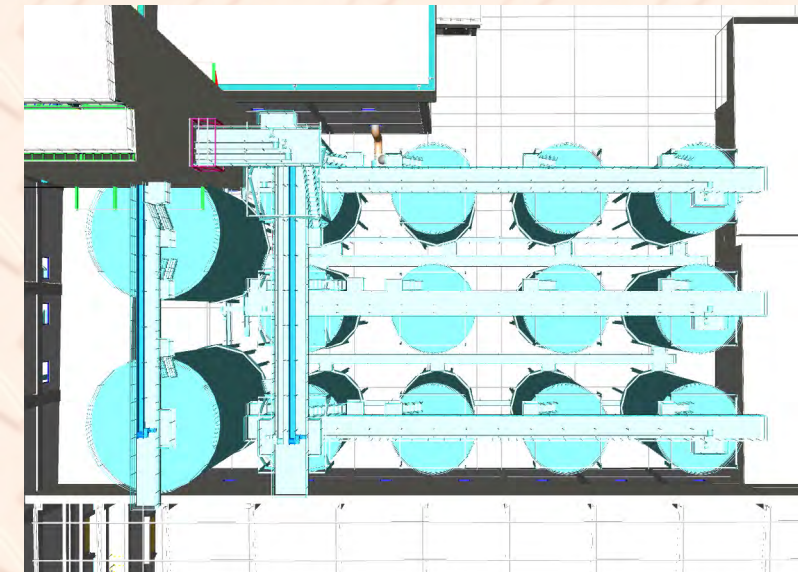
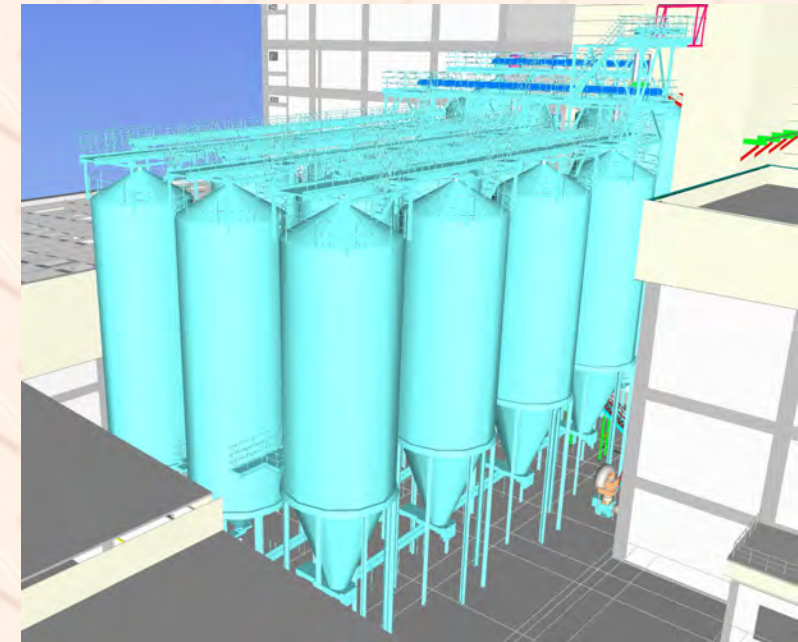
- External LIPP Silo and Flat Silo Installation

BUHLER



储丰钢板仓

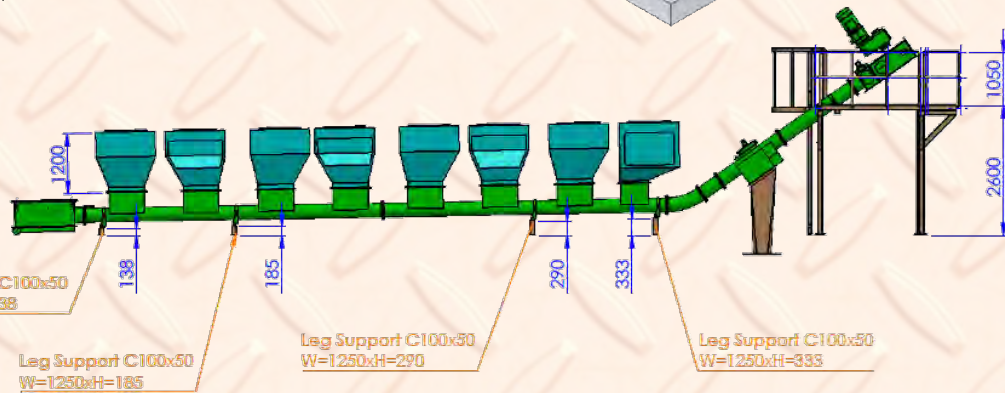
CFSILO



JOB REFERENCE.

Schrage
CONVEYING SYSTEMS

Installation Chain Tube Conveyor for PET Food
(20 Ton / Hr.)



3D-Equipment Drawing



Move Existing Equipment out



Installation Job



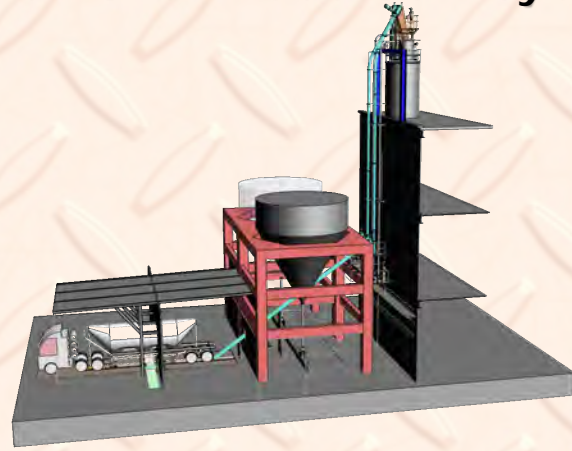
Up-Packing and Check



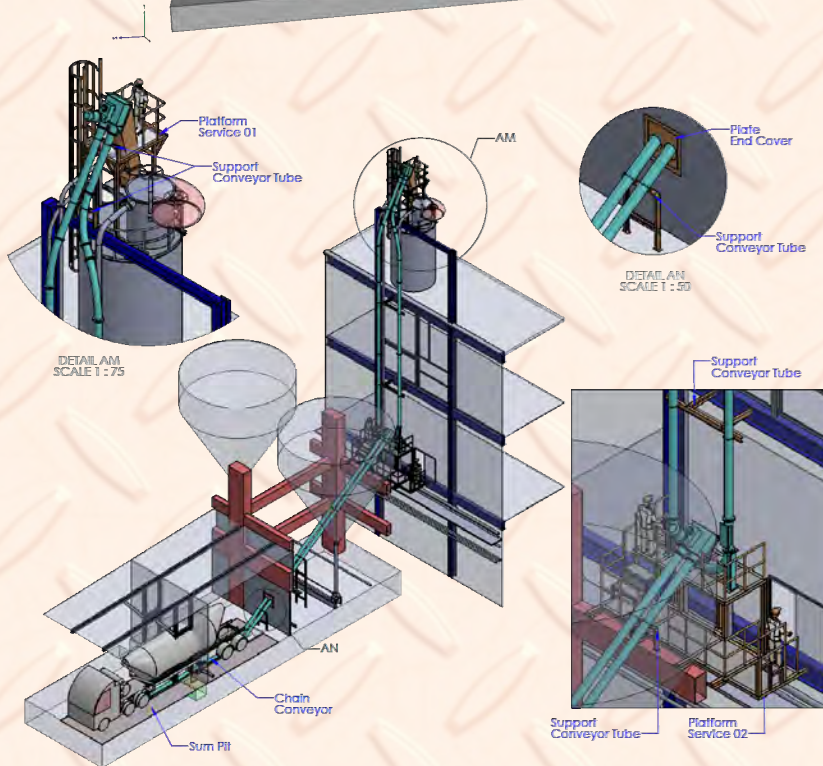
JOB REFERENCE.

Schrage
CONVEYING SYSTEMS

Installation Chain Tube Conveyor for PTA Powder (30 Ton / Hr.)



Un loading – Un Packing
&
Installation Work



3D Equipment Drawing

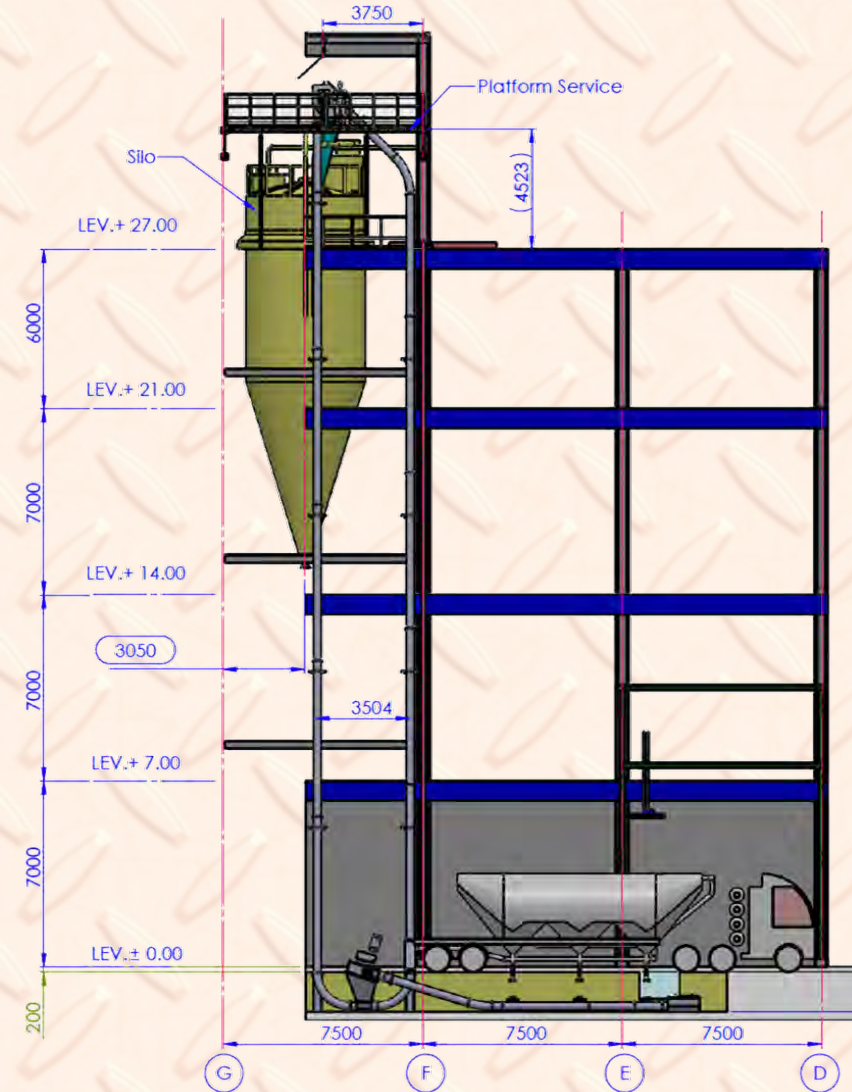
JOB REFERENCE.

Schrage
CONVEYING SYSTEMS

Installation Chain Tube Conveyor for PTA Powder (35 Ton / Hr.)



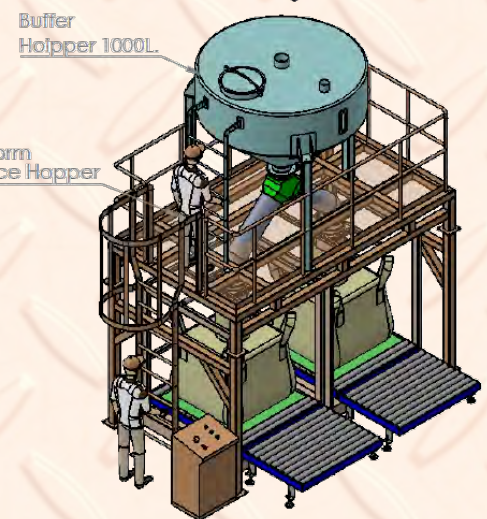
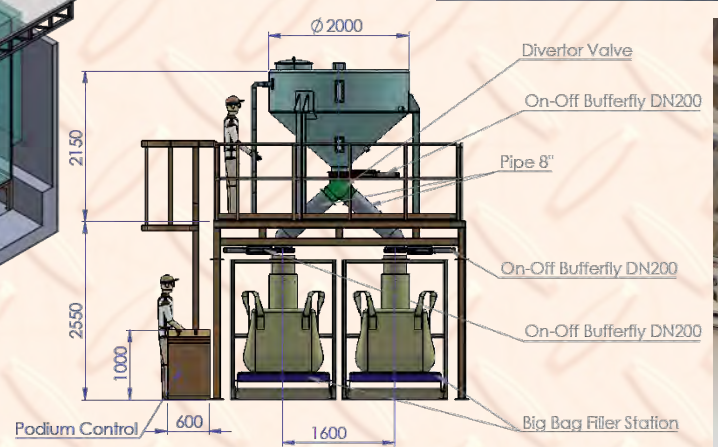
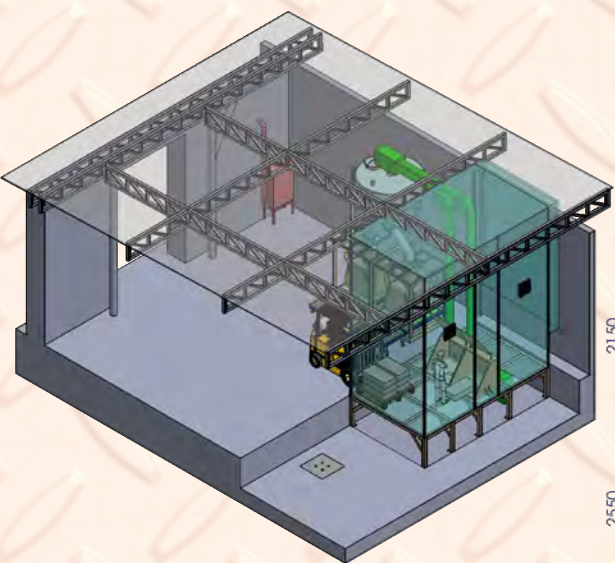
Installation Work



3D Equipment Drawing

JOB REFERENCE.

Big Bag Filler with weight scale.
Batching Control Accuracy $\pm . 0.3-0.5\%$



Tipping Station



Installation Job



JOB REFERENCE.



บริษัท เบ็ลท แอนด์ แบร์ริงส์ จำกัด
Belt And Bearings Co., Ltd.

Belt and Bearings Co.,Ltd . Supply Main
Ingenium Co.,Ltd . Support for Installation work.



Un-loading Job



Installation Job

JOB REFERENCE.



Belt and Bearings Co.,Ltd . Supply Main
Ingenium Co.,Ltd . Support for Installation work.



Copyright © 2015 All Rights Reserved. - INGENIUM CO.,LTD



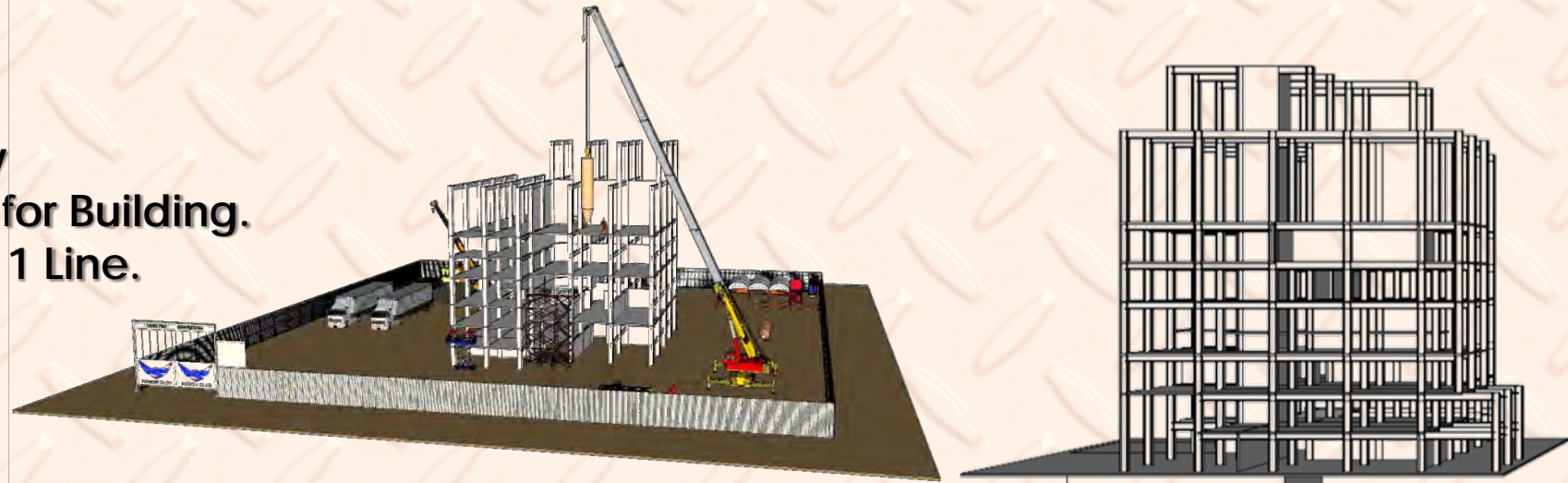
Complete Installation Job

JOB REFERENCE.

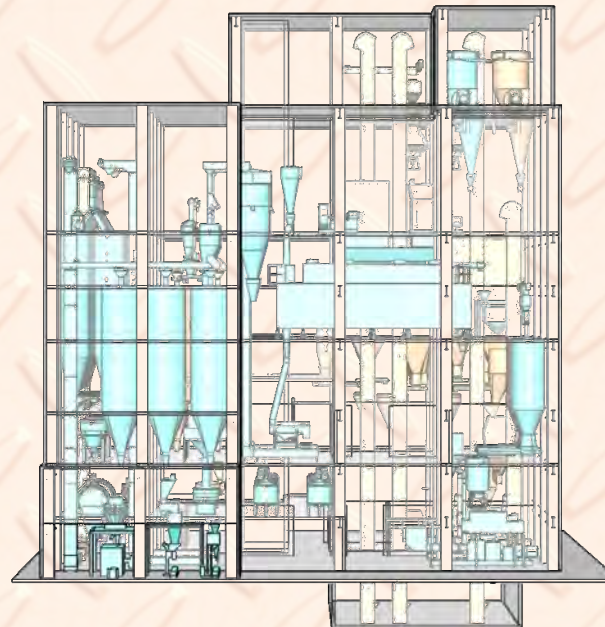
Installation for Animal Feed Factory

- Installation Steel Structure Frame for Building.
 - Installation for PET Food Machine 1 Line.
- Complete with.-

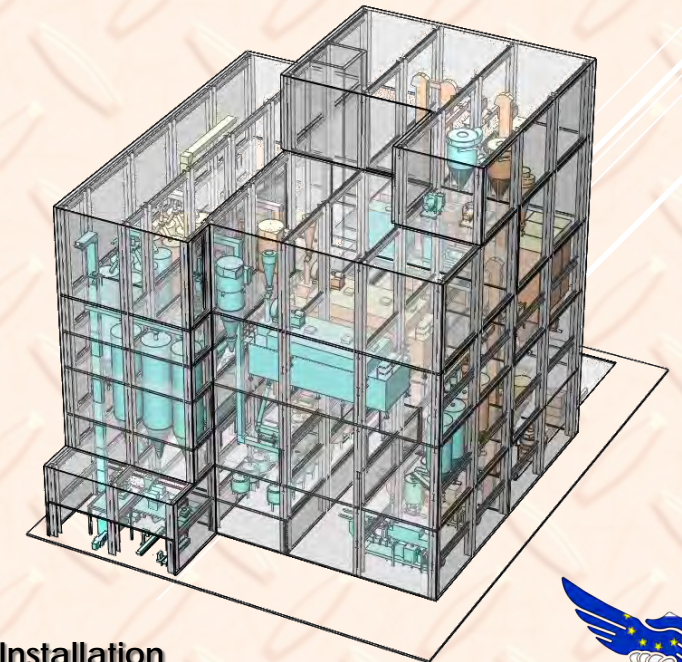
- ✓ Raw Material Receiving
- ✓ Batching System
- ✓ Mixing System
- ✓ Grinding System
- ✓ Pulverizer System
- ✓ 2nd Mixing System
- ✓ Extrusion system
- ✓ Drying System
- ✓ Liquid Coating & Cooling System
- ✓ Finish Products System
- ✓ Packaging System
- ✓ Liquid Adding System
- ✓ Electrical Control System



Steel Structure Installation



Equipment Installation

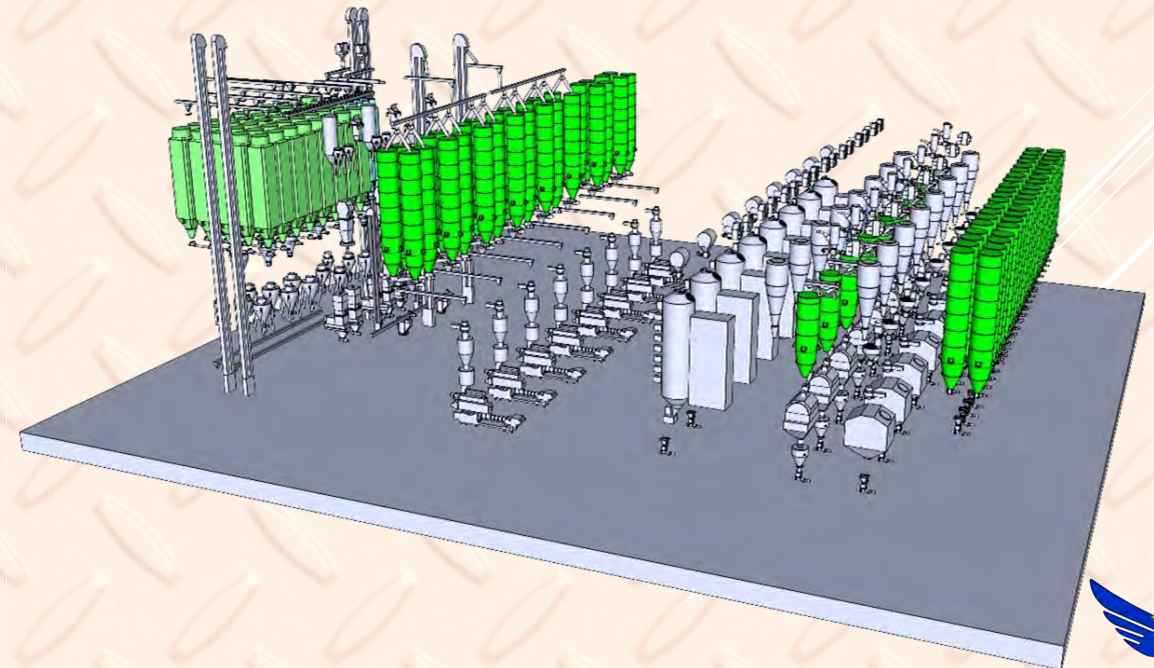
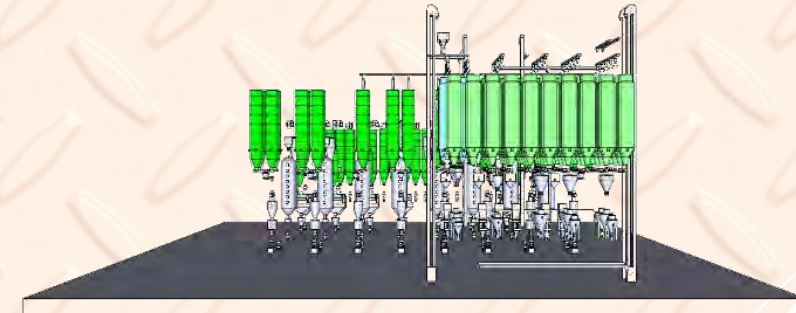
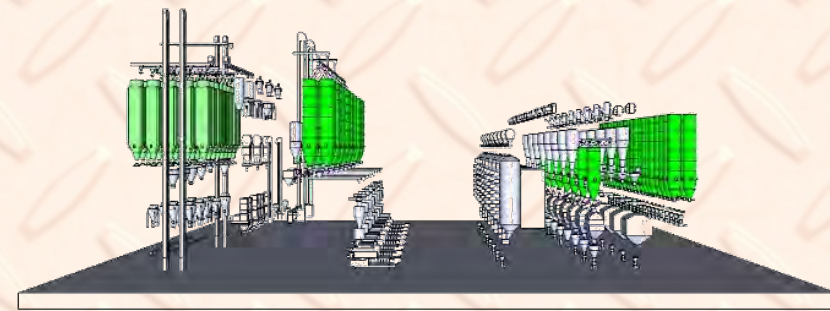


JOB REFERENCE.

Installation for PET Food Factory

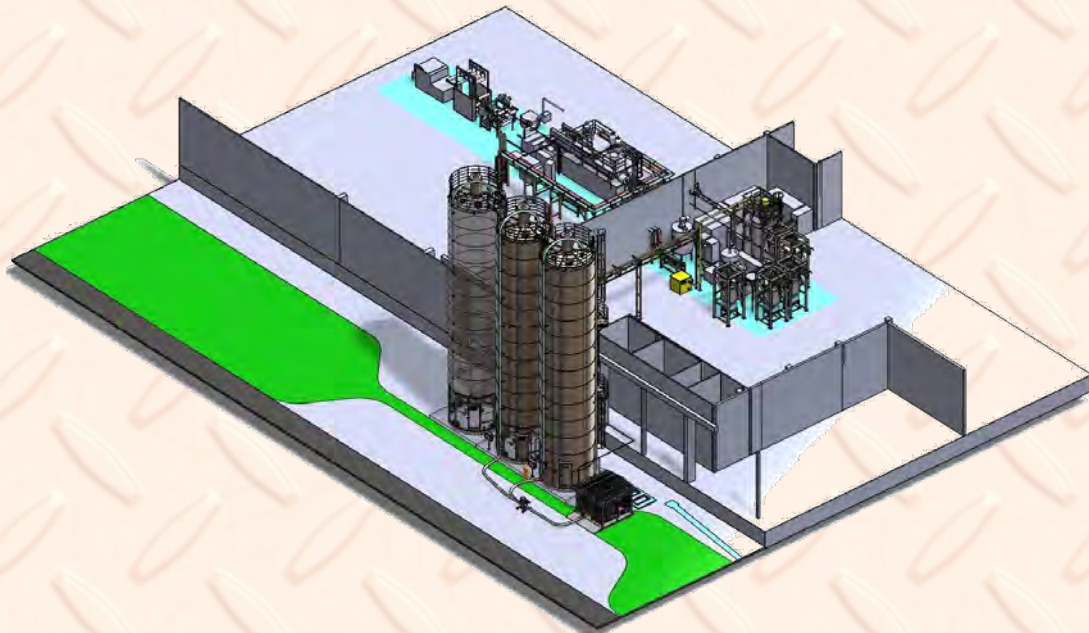
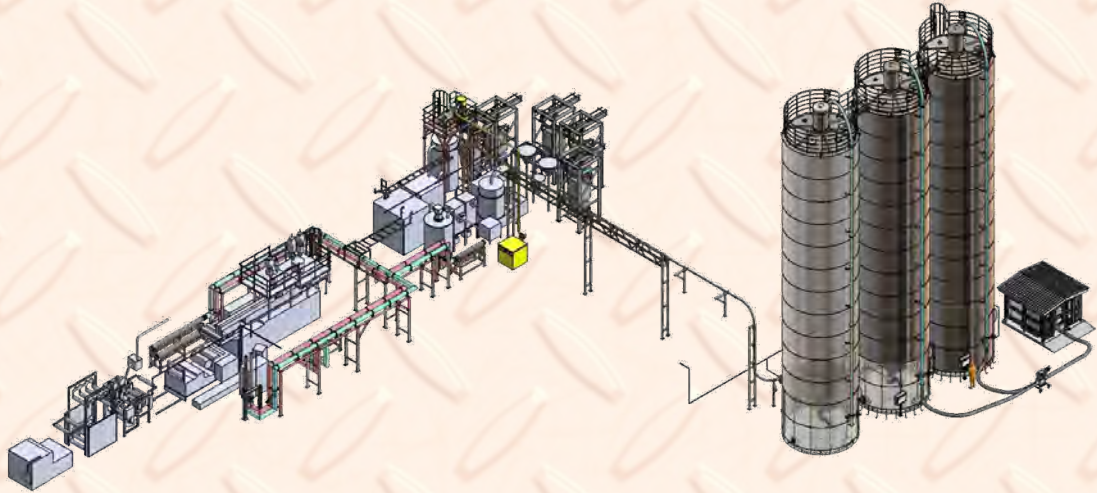
- Installation Main Machine for PET Food Machine 5 Line.
Complete with.-

- ✓ Unloading machine to storage area(Over 300 Container)
- ✓ Raw Material Receiving
 - External LIPP Silo Dia 8 m. x H18 m. (1000 m³) @ 2 Unit
 - External LIPP Silo Dia 5.5 m. x H12 m. (350m³) @ 7 Unit
 - External Flat Silo Dia 5.5 m. x H12 m. (350m³) @ 5 Unit
- ✓ All Silo and Dia 2 m. x H12 m. Bin @ 147 Unit
- ✓ All Bucket Elevator
- ✓ Batching System
- ✓ Mixing System
- ✓ Grinding System
- ✓ Pulverizer System
- ✓ Extrusion System
- ✓ Drying System
- ✓ Coating System
- ✓ Finish Products Bin
- ✓ Platform and Support
- ✓ Piping for Pneumatic Transfer



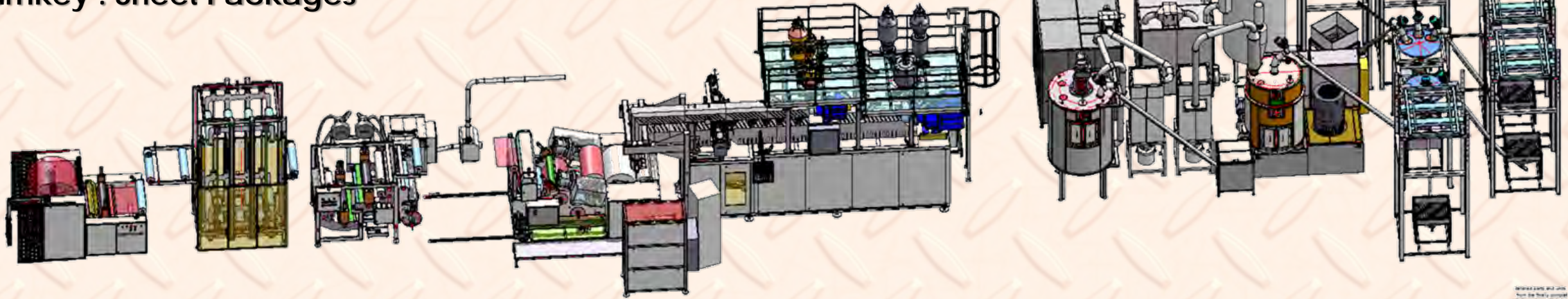
JOB REFERENCE.

Turnkey : Sheet Packages : Storage Silo



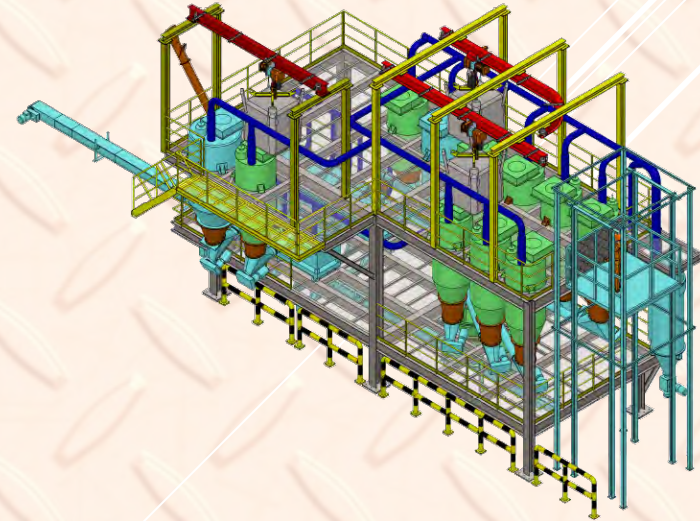
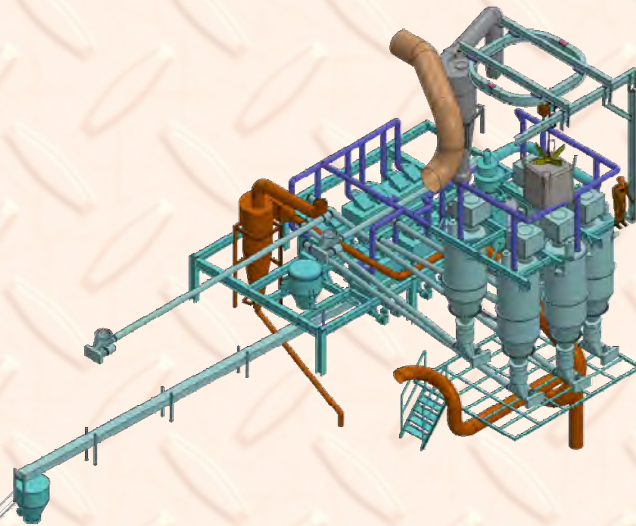
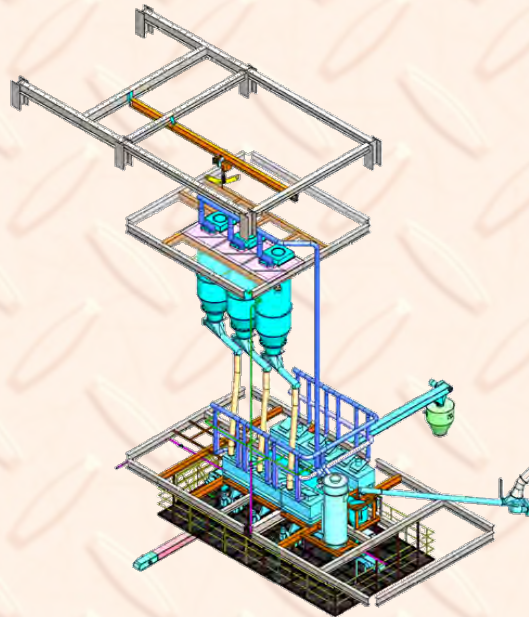
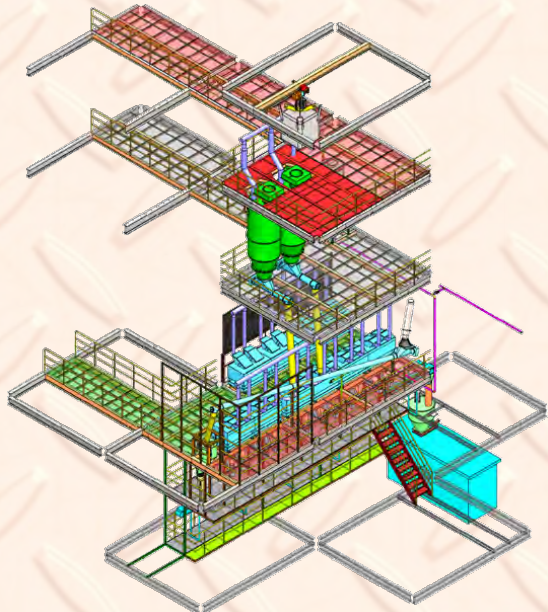
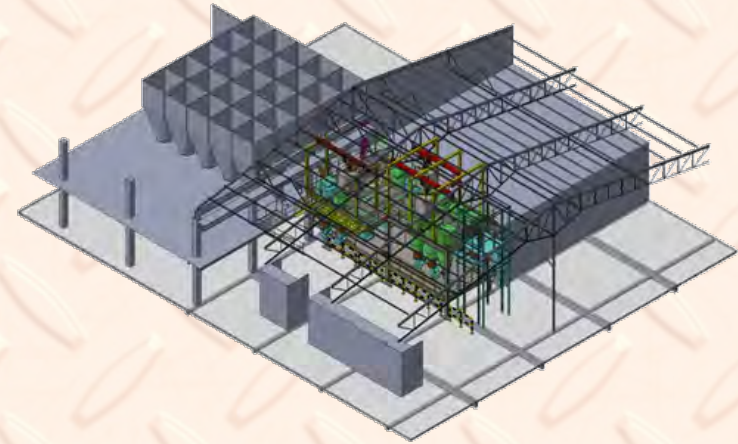
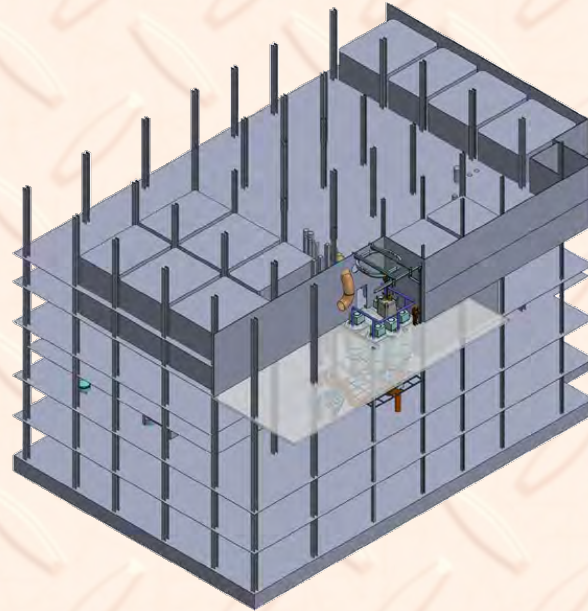
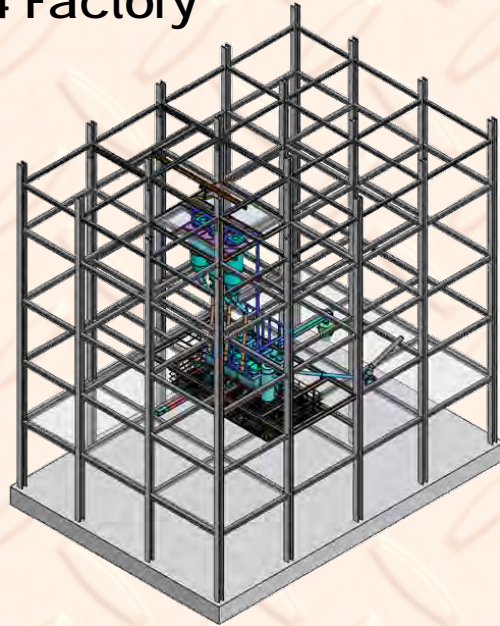
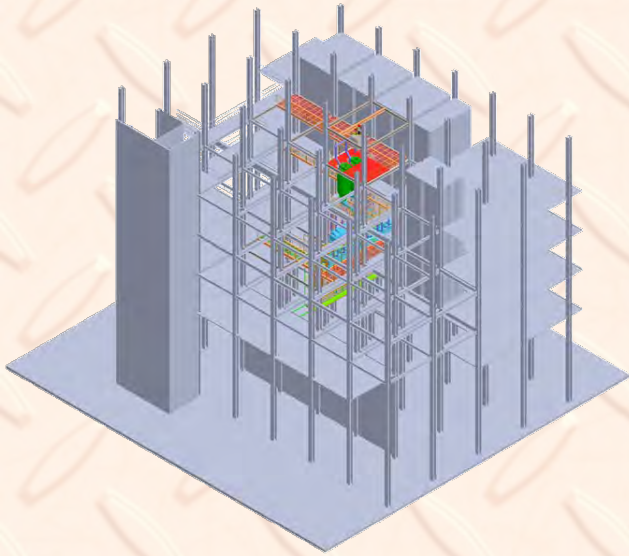
JOB REFERENCE.

Turnkey : Sheet Packages



JOB REFERENCE.

Installation Micro Scale for 4 Factory



JOB REFERENCE.

Un-loading and Un-Packing and Move to Storage area

The maximum number of containers in 1 unloading job is 300 containers.

Complete Progress report Unloading

Ingenium Co.,Ltd
25/28 Moo 4 T. Bang Phai A. Phang
Nonthaburi, 11000 Thailand
Tel/Fax: 02-117-6619
www.ingenium.co.th



Ingenium Co.,Ltd
25/28 Moo 4 T. Bang Phai A. Phang
Nonthaburi, 11000 Thailand
Tel/Fax: 02-117-6619
www.ingenium.co.th



Complete Progress report Unloading Buhler

Project Name: PCG Design Mechanical Installation Date: 11/03/2023
Client Name: Perfect companion Group Co., Ltd Location: Dayang
Subject: Unloading machine at warehouse (project) Write By: (Name)
Title: Progress Report

Container No. J Container NO. KOCU493370
Seal No. ZH 1201184
Tare weight/height: 24-7900 mm/ft
Time: 8:00 - 9:10 am.
Date: 03/11/2023
Open container

NO	Work plan	Progress (previous)	Progress (current)	Detail
1	Unloading	0%	100%	40 Containers unloading 1 Containers

Please Job and RVT activity before start working.



PROFESSIONAL INSTALLATION SERVICE
Page 1 of 9

PROFESSIONAL INSTALLATION SERVICE
Page 2 of 10

Ingenium Co.,Ltd
25/28 Moo 4 T. Bang Phai A. Phang
Nonthaburi, 11000 Thailand
Tel/Fax: 02-117-6619
www.ingenium.co.th



Ingenium Co.,Ltd
25/28 Moo 4 T. Bang Phai A. Phang
Nonthaburi, 11000 Thailand
Tel/Fax: 02-117-6619
www.ingenium.co.th



Unloading.

Clear empty Clean the door containers.



PROFESSIONAL INSTALLATION SERVICE
Page 3 of 10



PROFESSIONAL INSTALLATION SERVICE
Page 4 of 10



JOB REFERENCE.

Our panel are designed and program by people who understand panel, ever to operate the system and maintenance the panel. Since we also support our and other vendors products.



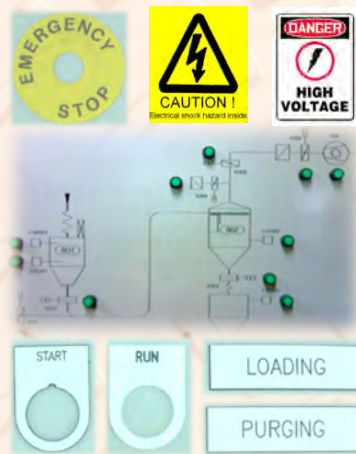
Electrical Drawing



Control With AB PLC



Control With S7-300 PLC



Mimic Diagram & Nameplate



Electrical with Pneumatic Control



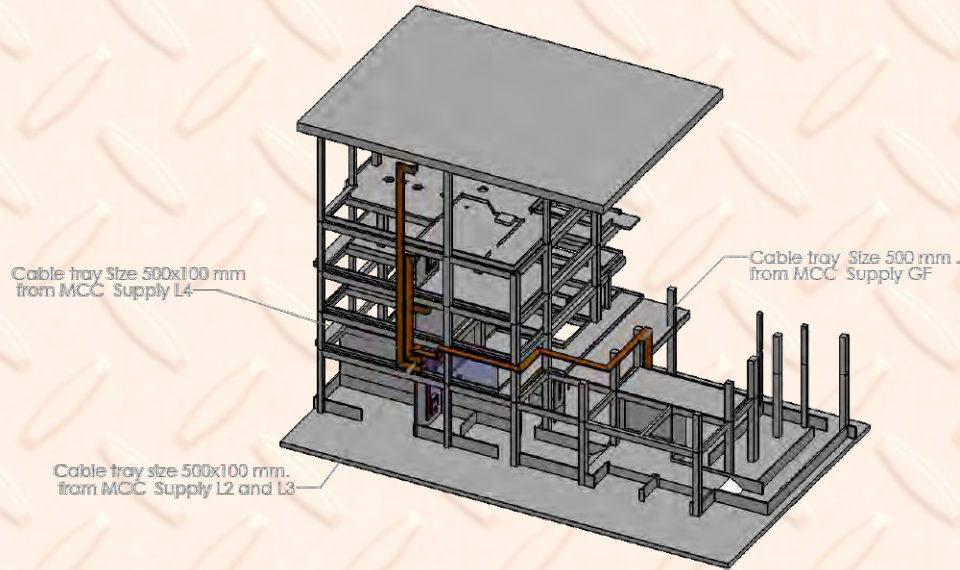
Machine Safety Control



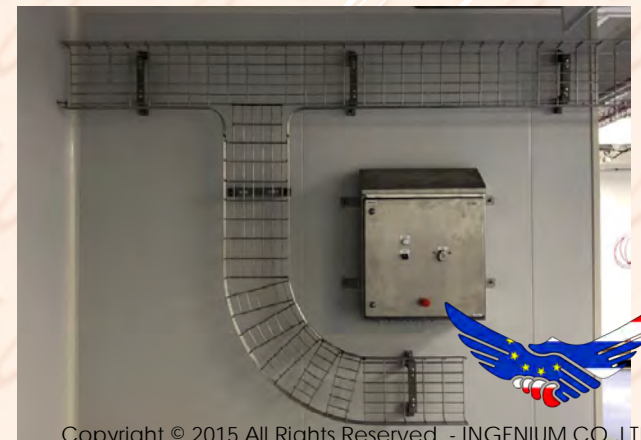
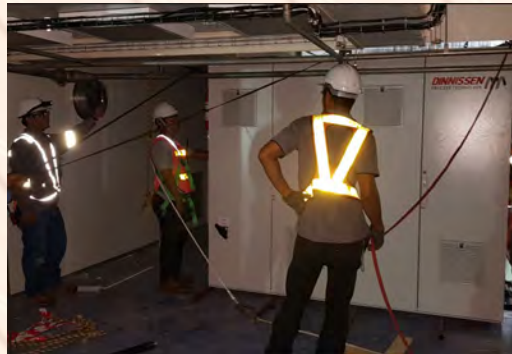
JOB REFERENCE.



Main Equipment . Dinnissen Process Technology
Ingenium . Supply Electrical Component and Installation Work

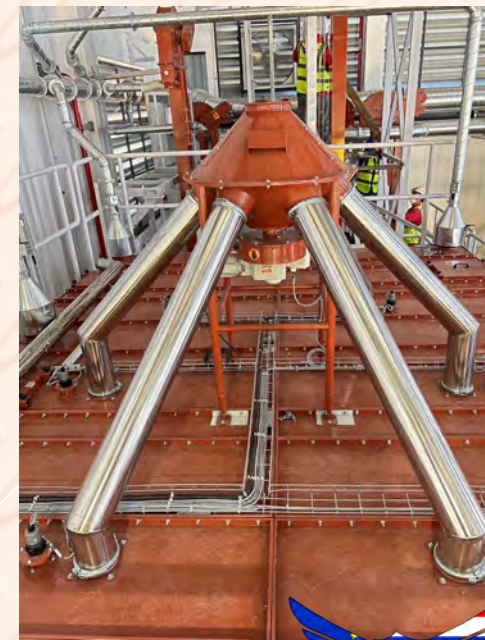
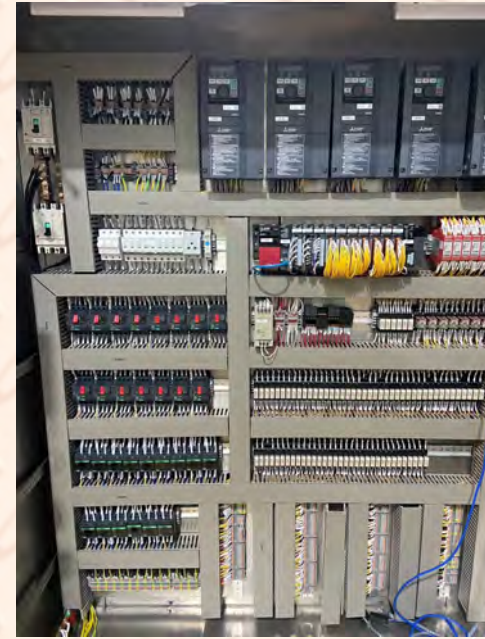
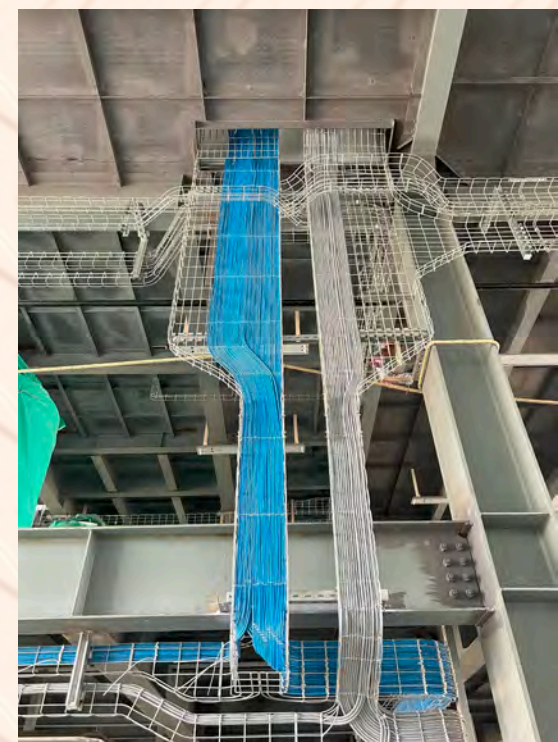


3D Cable Routing Layout Drawing



JOB REFERENCE.

Electrical Installation Work.



EXHIBITION OF INGENIUM

PROPAK VICTAM

Asia



CREATOPS
FIELD & FICE



VIV ASIA BANGKOK, THAILAND

THAILAND COFFEE FEST



CORPORATE SOCIAL RESPONSIBILITY (CSR)





ซีพี รีเทลลิงค์ จำกัด



CHANNAKORN
WWW.CHANNAKORN.CO.TH



CARABAO GROUP



Thank You

